

CREB-1 Monoclonal Antibody

Description

Product type	Primary Antibody
Code	BT-MCA0382
Host	Mouse
Isotype	IgG
Size	50ul, 100ul
Immunogen	Purified recombinant fragment of human CREB-1 expressed in E. Coli.
Mol wt	N/A
Species reactivity	Human,Mouse,Rat,Monkey
Clonality	Monoclonal
Recommended application	WB, IHC-p, IF, ICC, ELISA
Concentration	1 mg/ml
Full name	Cyclic AMP-responsive element-binding protein 1
Synonyms	CREB1; Cyclic AMP-responsive element-binding protein 1; CREB-1; cAMP-responsive element-binding protein 1

This product is for research use only, not for use in human, therapeutic or diagnostic procedure.

Background

This gene encodes a transcription factor that is a member of the leucine zipper family of DNA binding proteins. This protein binds as a homodimer to the cAMP-responsive element, an octameric palindrome. The protein is phosphorylated by several protein kinases, and induces transcription of genes in response to hormonal stimulation of the cAMP pathway. Alternate splicing of this gene results in several transcript variants encoding different isoforms.

Recommended Dilution

ELISA: 1:10000

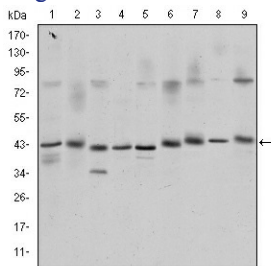
IF: 1:200 - 1:1000

IHC: 1:200 - 1:1000

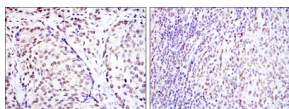
WB: 1:500 - 1:2000

Not yet tested in other applications.

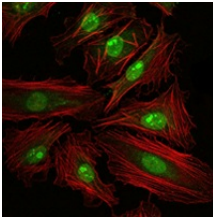
Images



Western Blot analysis using CREB-1 Monoclonal antibody against K562 (1) Jurkat (2) L1210 (3) HEK293 (4) A431 (5) HeLa (6) Cos7 (7) PC-12 (8) and NIH/3T3 (9) cell lysate.



Immunohistochemistry analysis of paraffin-embedded prostate cancer tissues (left) and submaxillary tumor tissues (right) with DAB staining using CREB-1 Monoclonal antibody.



Immunofluorescence analysis of HeLa cells using CREB-1 Monoclonal antibody (green). Red: Actin filaments have been labeled with Alexa Fluor-555 phalloidin.

Storage

-20°C for one year

501 Changsheng S Rd, Nanhu Dist, Jiaxing, Zhejiang, China

Tel: 86 21 31007137 | E-mail: save@bt-laboratory.com | www.bt-laboratory.com