

## CTCF Monoclonal Antibody

### Description

<b>Product type</b>	Primary Antibody
<b>Code</b>	BT-MCA0391
<b>Host</b>	Mouse
<b>Isotype</b>	IgG
<b>Size</b>	50ul, 100ul
<b>Immunogen</b>	Purified recombinant fragment of human CTCF expressed in E. Coli.
<b>Mol wt</b>	N/A
<b>Species reactivity</b>	Human,Monkey
<b>Clonality</b>	Monoclonal
<b>Recommended application</b>	WB, ELISA
<b>Concentration</b>	1 mg/ml
<b>Full name</b>	Transcriptional repressor CTCF
<b>Synonyms</b>	CTCF; Transcriptional repressor CTCF; 11-zinc finger protein; CCCTC-binding factor; CTCFL paralog

**This product is for research use only, not for use in human, therapeutic or diagnostic procedure.**

### Background

This gene is a member of the BORIS + CTCF gene family and encodes a transcriptional regulator protein with 11 highly conserved zinc finger (ZF) domains. This nuclear protein is able to use different combinations of the ZF domains to bind different DNA target sequences and proteins. Depending upon the context of the site, the protein can bind a histone acetyltransferase (HAT)-containing complex and function as a transcriptional activator or bind a histone deacetylase (HDAC)-containing complex and function as a transcriptional repressor. If the protein is bound to a transcriptional insulator element, it can block communication between enhancers and upstream promoters, thereby regulating imprinted expression. Mutations in this gene have been associated with invasive breast cancers, prostate cancers, and Wilms' tumors. Alternatively spliced transcript variants encoding different isoforms have been

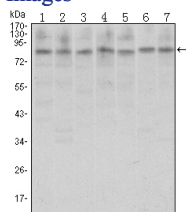
### Recommended Dilution

ELISA: 1:10000

WB: 1:500 - 1:2000

Not yet tested in other applications.

### Images



Western Blot analysis using CTCF Monoclonal antibody against A31 (1) MCF-7 (2) HeLa (3) HCT116 (4) Jurkat (5) NIH/3T3 (6) and Cos7 (7) cell lysate.

### Storage

-20°C for one year