

Cyclin B1 Monoclonal Antibody

Description

Product type	Primary Antibody
Code	BT-MCA0392
Host	Mouse
Isotype	IgG
Size	50ul, 100ul
Immunogen	Purified recombinant fragment of human Cyclin B1 expressed in E. Coli.
Mol wt	N/A
Species reactivity	Human,Rat
Clonality	Monoclonal
Recommended application	WB, IF, ICC, FCM, ELISA
Concentration	1 mg/ml
Full name	G2,mitotic-specific cyclin-B1
Synonyms	CCNB1; CCNB; G2; mitotic-specific cyclin-B1

This product is for research use only, not for use in human, therapeutic or diagnostic procedure.

Background

The protein encoded by this gene is a regulatory protein involved in mitosis. The gene product complexes with p34(cdc2) to form the maturation-promoting factor (MPF). Two alternative transcripts have been found, a constitutively expressed transcript and a cell cycle-regulated transcript, that is expressed predominantly during G2/M phase. The different transcripts result from the use of alternate transcription initiation sites.

Recommended Dilution

ELISA: 1:10000

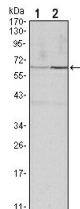
FC: 1:200 - 1:400

IF: 1:200 - 1:1000

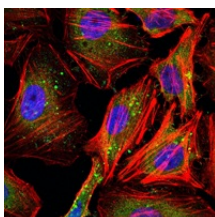
WB: 1:500 - 1:2000

Not yet tested in other applications.

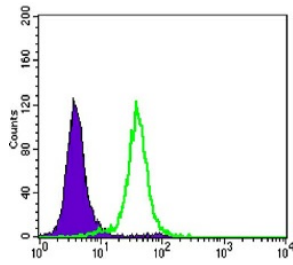
Images



Western Blot analysis using Cyclin B1 Monoclonal antibody against HeLa (1) and PC-12 (2) cell lysate.



Immunofluorescence analysis of HeLa cells using Cyclin B1 Monoclonal antibody (green). Blue: DRAQ5 fluorescent DNA dye. Red: Actin filaments have been labeled with Alexa Fluor-555 phalloidin.



Flow cytometric analysis of HeLa cells using Cyclin B1 Monoclonal antibody (green) and negative control (purple).

Storage

-20°C for one year

501 Changsheng S Rd, Nanhū Dist, Jiaxing, Zhejiang, China

Tel: 86 21 31007137 | E-mail: save@bt-laboratory.com | www.bt-laboratory.com