

Cyclophilin B Monoclonal Antibody(1B3)

Description

| | |
|--------------------------------|--|
| Product type | Primary Antibody |
| Code | BT-MCA0399 |
| Host | Mouse |
| Isotype | IgG |
| Size | 20ul, 50ul, 100ul |
| Immunogen | Synthetic Peptide of Cyclophilin B |
| Mol wt | N/A |
| Species reactivity | Human,Rat,Mouse |
| Clonality | Monoclonal |
| Recommended application | WB, IHC-p, IF |
| Concentration | 1 mg/ml |
| Full name | Peptidyl-prolyl cis-trans isomerase B |
| Synonyms | PPIB; CYPB; Peptidyl-prolyl cis-trans isomerase B; PPlase B; CYP-S1; Cyclophilin B; Rotamase B; S-cyclophilin; SCYLP |

This product is for research use only, not for use in human, therapeutic or diagnostic procedure.

Background

The protein encoded by this gene is a cyclosporine-binding protein and is mainly located within the endoplasmic reticulum. It is associated with the secretory pathway and released in biological fluids. This protein can bind to cells derived from T- and B-lymphocytes, and may regulate cyclosporine A-mediated immunosuppression. Variants have been identified in this protein that give rise to recessive forms of osteogenesis imperfecta.

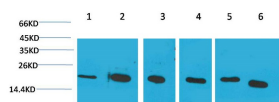
Recommended Dilution

IHC: 1:100-200

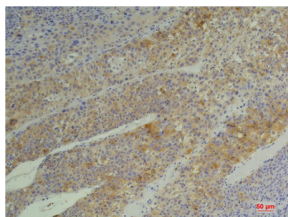
WB: 1:1000-2000

Not yet tested in other applications.

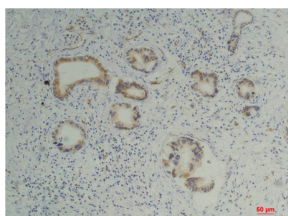
Images



Western blot analysis of 1) Hela, 2) Jurkat, 3) 293T, 4) Rat Liver Tissue, 5) 3T3, 6) HepG2 with Cyclophilin B Mouse Monoclonal antibody diluted at 1:2,000.



Immunohistochemical analysis of paraffin-embedded Human Hepatocellular Carcinoma using Cyclophilin B Mouse Monoclonal antibody diluted at 1:200.



Immunohistochemical analysis of paraffin-embedded Human Pancreatic Carcinoma using Cyclophilin B Mouse Monoclonal antibody diluted at 1:200.

Storage

-20°C for one year

501 Changsheng S Rd, Nanhu Dist, Jiaxing, Zhejiang, China

Tel: 86 21 31007137 | E-mail: save@bt-laboratory.com | www.bt-laboratory.com