

## Cytokeratin (Pan) Monoclonal Antibody

### Description

<b>Product type</b>	Primary Antibody
<b>Code</b>	BT-MCA0418
<b>Host</b>	Mouse
<b>Isotype</b>	IgG
<b>Size</b>	50ul, 100ul
<b>Immunogen</b>	Purified recombinant fragment of Cytokeratin 5 expressed in E. Coli.
<b>Mol wt</b>	N/A
<b>Species reactivity</b>	Human
<b>Clonality</b>	Monoclonal
<b>Recommended application</b>	IHC-p, IF, ICC, ELISA
<b>Concentration</b>	1 mg/ml
<b>Full name</b>	Keratin type II cytoskeletal 5
<b>Synonyms</b>	KRT5; Keratin; type II cytoskeletal 5; 58 kDa cytokeratin; Cytokeratin-5; CK-5; Keratin-5; K5; Type-II keratin Kb5

This product is for research use only, not for use in human, therapeutic or diagnostic procedure.

### Background

The protein encoded by this gene is a member of the keratin gene family. The type II cytokeratins consist of basic or neutral proteins which are arranged in pairs of heterotypic keratin chains coexpressed during differentiation of simple and stratified epithelial tissues. This type II cytokeratin is specifically expressed in the basal layer of the epidermis with family member KRT14. Mutations in these genes have been associated with a complex of diseases termed epidermolysis bullosa simplex. The type II cytokeratins are clustered in a region of chromosome 12q12-q13.

### Recommended Dilution

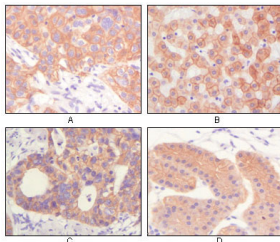
ELISA: 1:10000

IF: 1:200 - 1:1000

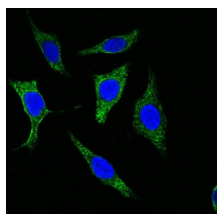
IHC: 1:200 - 1:1000

Not yet tested in other applications.

### Images



Immunohistochemistry analysis of paraffin-embedded human lung squamous cell carcinoma (A), normal hepatocyte (B), colon adenocarcinoma, normal stomach tissue (D), showing cytoplasmic and membrane localization with DAB staining using Cytokeratin (Pan) Monoc



Confocal immunofluorescence analysis of methanol-fixed Eca-109 cells using Cytokeratin (Pan) Monoclonal antibody (green), showing cytoplasmic localization. Blue: DRAQ5 fluorescent DNA dye.

## Storage

-20°C for one year

501 Changsheng S Rd, Nanhu Dist, Jiaxing, Zhejiang, China

Tel: 86 21 31007137 | E-mail: [save@bt-laboratory.com](mailto:save@bt-laboratory.com) | [www.bt-laboratory.com](http://www.bt-laboratory.com)