

Cytokeratin 18 Monoclonal Antibody

Description

Product type	Primary Antibody
Code	BT-MCA0422
Host	Mouse
Isotype	IgG
Size	50ul, 100ul
Immunogen	Purified recombinant fragment of human Cytokeratin 18 (aa391-483) expressed in E. Coli.
Mol wt	N/A
Species reactivity	Human
Clonality	Monoclonal
Recommended application	WB, IHC-p, IF, ELISA
Concentration	1 mg/ml
Full name	Keratin type I cytoskeletal 18
Synonyms	KRT18; CYK18; PIG46; Keratin; type I cytoskeletal 18; Cell proliferation-inducing gene 46 protein; Cytokeratin-18; CK-18; Keratin-18; K18

This product is for research use only, not for use in human, therapeutic or diagnostic procedure.

Background

KRT18 encodes the type I intermediate filament chain keratin 18. Keratin 18, together with its filament partner keratin 8, are perhaps the most commonly found members of the intermediate filament gene family. They are expressed in single layer epithelial tissues of the body. Mutations in this gene have been linked to cryptogenic cirrhosis. Two transcript variants encoding the same protein have been found for this gene.

Recommended Dilution

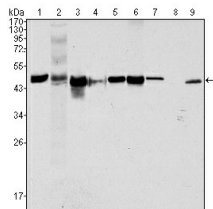
ELISA: 1:10000

IHC: 1:200 - 1:1000

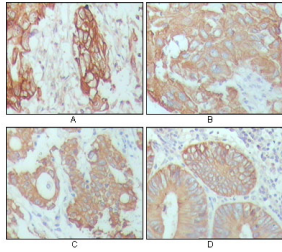
WB: 1:500 - 1:2000

Not yet tested in other applications.

Images



Western Blot analysis using Cytokeratin 18 Monoclonal antibody against HeLa (1) NIH/3T3 (2) A549 (3) Jurkat (4) MCF-7(5) HepG2 (6) A431 (7) HEK293 (8) and K562 (9) cell lysate.



Immunohistochemistry analysis of paraffin-embedded human breast carcinoma (A), hepatocarcinoma (B), stomach cancer (C) and colon cancer tissue (D), showing cytoplasmic location with DAB staining using Cytokeratin 18 Monoclonal antibody.

Storage

-20°C for one year

501 Changsheng S Rd, Nanhu Dist, Jiaxing, Zhejiang, China

Tel: 86 21 31007137 | E-mail: save@bt-laboratory.com | www.bt-laboratory.com