

## Cytokeratin 18 Monoclonal Antibody(1B3)

### Description

<b>Product type</b>	Primary Antibody
<b>Code</b>	BT-MCA0423
<b>Host</b>	Mouse
<b>Isotype</b>	IgG
<b>Size</b>	20ul, 50ul, 100ul
<b>Immunogen</b>	Recombinant Protein of Keratin type I cytoskeletal 18
<b>Mol wt</b>	47927
<b>Species reactivity</b>	Human,Mouse,Rat
<b>Clonality</b>	Monoclonal
<b>Recommended application</b>	WB, IF, ICC
<b>Concentration</b>	1 mg/ml
<b>Full name</b>	Keratin type I cytoskeletal 18
<b>Synonyms</b>	KRT18; CYK18; PIG46; Keratin; type I cytoskeletal 18; Cell proliferation-inducing gene 46 protein; Cytokeratin-18; CK-18; Keratin-18; K18

This product is for research use only, not for use in human, therapeutic or diagnostic procedure.

### Background

KRT18 encodes the type I intermediate filament chain keratin 18. Keratin 18, together with its filament partner keratin 8, are perhaps the most commonly found members of the intermediate filament gene family. They are expressed in single layer epithelial tissues of the body. Mutations in this gene have been linked to cryptogenic cirrhosis. Two transcript variants encoding the same protein have been found for this gene.

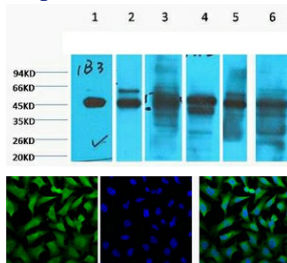
### Recommended Dilution

IF: 1:100-200

WB: 1:1000 -3000

Not yet tested in other applications.

### Images



Western blot analysis of 1) HepG2. 2) HeLa, 3) Mouse Liver tissue, 4) C2C12. 5) Rat Heart tissue, 6) Mouse Skeletal Muscle tissue diluted at 1:2000.

IF analysis of HeLa, and DAPI (Right) diluted at 1:100.

### Storage

-20°C for one year