

## Cytokeratin 18 Monoclonal Antibody(8F2)

### Description

Product type	Primary Antibody
Code	BT-MCA0425
Host	Mouse
Isotype	IgG
Size	20ul, 50ul, 100ul
Immunogen	Recombinant Protein of Keratin type I cytoskeletal 18
Mol wt	47927
Species reactivity	Human,Mouse,Rat
Clonality	Monoclonal
Recommended application	WB
Concentration	1 mg/ml
Full name	Keratin type I cytoskeletal 18
Synonyms	KRT18; CYK18; PIG46; Keratin; type I cytoskeletal 18; Cell proliferation-inducing gene 46 protein; Cytokeratin-18; CK-18; Keratin-18; K18

This product is for research use only, not for use in human, therapeutic or diagnostic procedure.

### Background

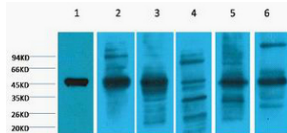
KRT18 encodes the type I intermediate filament chain keratin 18. Keratin 18, together with its filament partner keratin 8, are perhaps the most commonly found members of the intermediate filament gene family. They are expressed in single layer epithelial tissues of the body. Mutations in this gene have been linked to cryptogenic cirrhosis. Two transcript variants encoding the same protein have been found for this gene.

### Recommended Dilution

WB: 1:1000-3000

Not yet tested in other applications.

### Images



Western blot analysis of 1) HepG2. 2) HeLa, 3) Mouse Liver tissue, 4) C2C12. 5) Rat Heart tissue, 6) Mouse Skeletal Muscle tissue, (8F2) diluted at 1:2000.

### Storage

-20°C for one year

501 Changsheng S Rd, Nanhu Dist, Jiaxing, Zhejiang, China

Tel: 86 21 31007137 | E-mail: [save@bt-laboratory.com](mailto:save@bt-laboratory.com) | [www.bt-laboratory.com](http://www.bt-laboratory.com)