

Cytokeratin 7 Monoclonal Antibody

Description

Product type	Primary Antibody
Code	BT-MCA0432
Host	Mouse
Isotype	IgG
Size	50ul, 100ul
Immunogen	Purified recombinant fragment of human Cytokeratin 7 expressed in E. Coli.
Mol wt	N/A
Species reactivity	Human
Clonality	Monoclonal
Recommended application	WB, FCM, ELISA
Concentration	1 mg/ml
Full name	Keratin type II cytoskeletal 7
Synonyms	KRT7; SCL; Keratin; type II cytoskeletal 7; Cytokeratin-7; CK-7; Keratin-7; K7; Sarcolectin; Type-II keratin Kb7

This product is for research use only, not for use in human, therapeutic or diagnostic procedure.

Background

The protein encoded by this gene is a member of the keratin gene family. The type II cytokeratins consist of basic or neutral proteins which are arranged in pairs of heterotypic keratin chains coexpressed during differentiation of simple and stratified epithelial tissues. This type II cytokeratin is specifically expressed in the simple epithelia lining the cavities of the internal organs and in the gland ducts and blood vessels. The genes encoding the type II cytokeratins are clustered in a region of chromosome 12q12-q13. Alternative splicing may result in several transcript variants| however, not all variants have been fully described.

Recommended Dilution

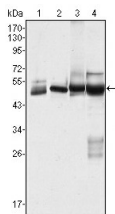
ELISA: 1:10000

FC: 1:200 - 1:400

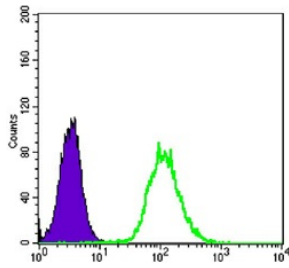
WB: 1:500 - 1:2000

Not yet tested in other applications.

Images



Western Blot analysis using Cytokeratin 7 Monoclonal antibody against HeLa (1) MCF-7 (2) A431 (3) and A549 (4) cell lysate.



Flow cytometric analysis of HeLa cells using Cytokeratin 7 Monoclonal antibody (green) and negative control (purple).

Storage

-20°C for one year

501 Changsheng S Rd, Nanhu Dist, Jiaxing, Zhejiang, China

Tel: 86 21 31007137 | E-mail: save@bt-laboratory.com | www.bt-laboratory.com