

## DNA-PKCS Monoclonal Antibody

### Description

<b>Product type</b>	Primary Antibody
<b>Code</b>	BT-MCA0447
<b>Host</b>	Mouse
<b>Isotype</b>	IgG
<b>Size</b>	50ul, 100ul
<b>Immunogen</b>	Purified recombinant fragment of human DNA-PKCS expressed in E. Coli.
<b>Mol wt</b>	N/A
<b>Species reactivity</b>	Human
<b>Clonality</b>	Monoclonal
<b>Recommended application</b>	WB, IHC-p, IF, ICC, ELISA
<b>Concentration</b>	1 mg/ml
<b>Full name</b>	DNA-dependent protein kinase catalytic subunit
<b>Synonyms</b>	PRKDC; HYRC; HYRC1; DNA-dependent protein kinase catalytic subunit; DNA-PK catalytic subunit; DNA-PKcs; DNPk1; p460

This product is for research use only, not for use in human, therapeutic or diagnostic procedure.

### Background

This gene encodes the catalytic subunit of the DNA-dependent protein kinase (DNA-PK). It functions with the Ku70/Ku80 heterodimer protein in DNA double strand break repair and recombination. The protein encoded is a member of the PI3/PI4-kinase family.

### Recommended Dilution

ELISA: 1:10000

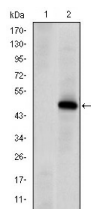
IF: 1:200 - 1:1000

IHC: 1:200 - 1:1000

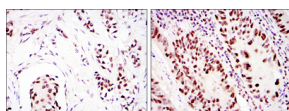
WB: 1:500 - 1:2000

Not yet tested in other applications.

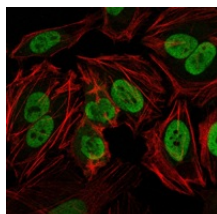
### Images



Western Blot analysis using DNA-PKCS Monoclonal antibody against HEK293 (1) and PRKDC-hIgGFc transfected HEK293 (2) cell lysate.



Immunohistochemistry analysis of paraffin-embedded breast cancer (left) and colon cancer (right) with DAB staining using DNA-PKCS Monoclonal antibody.



Immunofluorescence analysis of HeLa cells using DNA-PKCS Monoclonal antibody (green). Red: Actin filaments have been labeled with Alexa Fluor-555 phalloidin.

## Storage

-20°C for one year

501 Changsheng S Rd, Nanhu Dist, Jiaxing, Zhejiang, China

Tel: 86 21 31007137 | E-mail: [save@bt-laboratory.com](mailto:save@bt-laboratory.com) | [www.bt-laboratory.com](http://www.bt-laboratory.com)