

E2A Monoclonal Antibody

Description

Product type	Primary Antibody
Code	BT-MCA0454
Host	Mouse
Isotype	IgG
Size	50ul, 100ul
Immunogen	Purified recombinant fragment of human E2A expressed in E. Coli.
Mol wt	N/A
Species reactivity	Human
Clonality	Monoclonal
Recommended application	WB, FCM, ELISA
Concentration	1 mg/ml
Full name	Transcription factor E2-alpha
Synonyms	TCF3; BHLHB21; E2A; ITF1; Transcription factor E2-alpha; Class B basic helix-loop-helix protein 21; bHLHb21; Immunoglobulin enhancer-binding factor E12; E47; Immunoglobulin transcription factor 1; Kappa-E2-binding factor; Transcription facto

This product is for research use only, not for use in human, therapeutic or diagnostic procedure.

Background

This gene encodes a member of the E protein (class I) family of helix-loop-helix transcription factors. E proteins activate transcription by binding to regulatory E-box sequences on target genes as heterodimers or homodimers, and are inhibited by heterodimerization with inhibitor of DNA-binding (class IV) helix-loop-helix proteins. E proteins play a critical role in lymphopoiesis, and the encoded protein is required for B and T lymphocyte development. Deletion of this gene or diminished activity of the encoded protein may play a role in lymphoid malignancies. This gene is also involved in several chromosomal translocations that are associated with lymphoid malignancies including pre-B-cell acute lymphoblastic leukemia (t(1|19), with PBX1), childhood leukemia (t(19|19), with TFPT) and acute leukemia (t(12|19), with ZNF384). Alternatively spliced transcript variants encoding multiple isoforms have been

Recommended Dilution

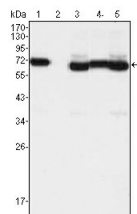
ELISA: 1:10000

FC: 1:200 - 1:400

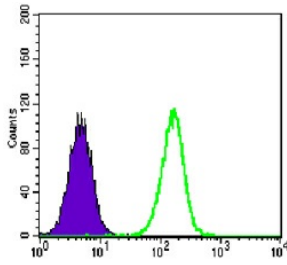
WB: 1:500 - 1:2000

Not yet tested in other applications.

Images



Western Blot analysis using E2A Monoclonal antibody against A549 (1) A431 (2) HeLa (3) PANC-1 (4) and PC-3 (5) cell lysate.



Flow cytometric analysis of A549 cells using E2A Monoclonal antibody (green) and negative control (purple).

Storage

-20°C for one year

501 Changsheng S Rd, Nanhu Dist, Jiaxing, Zhejiang, China

Tel: 86 21 31007137 | E-mail: save@bt-laboratory.com | www.bt-laboratory.com