

EGFR Monoclonal Antibody(1B10)

Description

Product type	Primary Antibody
Code	BT-MCA0467
Host	Mouse
Isotype	IgG
Size	20ul, 50ul, 100ul
Immunogen	Synthetic Peptide of EGFR
Mol wt	134277
Species reactivity	Human
Clonality	Monoclonal
Recommended application	WB, IHC-p, IF, ICC
Concentration	1 mg/ml
Full name	Epidermal growth factor receptor
Synonyms	EGFR; ERBB; ERBB1; HER1; Epidermal growth factor receptor; Proto-oncogene c-ErbB-1; Receptor tyrosine-protein kinase erbB-1

This product is for research use only, not for use in human, therapeutic or diagnostic procedure.

Background

The protein encoded by this gene is a transmembrane glycoprotein that is a member of the protein kinase superfamily. This protein is a receptor for members of the epidermal growth factor family. EGFR is a cell surface protein that binds to epidermal growth factor. Binding of the protein to a ligand induces receptor dimerization and tyrosine autophosphorylation and leads to cell proliferation. Mutations in this gene are associated with lung cancer.

Recommended Dilution

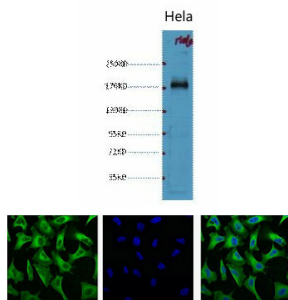
IF: 1:100-200

IHC-p: 50-200

WB: 1:1000

Not yet tested in other applications.

Images



Western blot analysis of HeLa diluted at 1:1000.

IF analysis of HeLa with antibody (Left) and DAPI (Right) diluted at 1:100.

Storage

-20°C for one year

