

EGFR Monoclonal Antibody(M6)

Description

Product type	Primary Antibody
Code	BT-MCA0468
Host	Mouse
Isotype	IgG
Size	20ul, 50ul, 100ul
Immunogen	Synthetic Peptide of EGFR
Mol wt	134277
Species reactivity	Human
Clonality	Monoclonal
Recommended application	WB
Concentration	1 mg/ml
Full name	Epidermal growth factor receptor
Synonyms	EGFR; ERBB; ERBB1; HER1; Epidermal growth factor receptor; Proto-oncogene c-ErbB-1; Receptor tyrosine-protein kinase erbB-1

This product is for research use only, not for use in human, therapeutic or diagnostic procedure.

Background

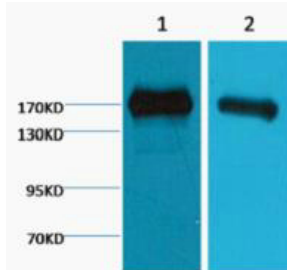
The protein encoded by this gene is a transmembrane glycoprotein that is a member of the protein kinase superfamily. This protein is a receptor for members of the epidermal growth factor family. EGFR is a cell surface protein that binds to epidermal growth factor. Binding of the protein to a ligand induces receptor dimerization and tyrosine autophosphorylation and leads to cell proliferation. Mutations in this gene are associated with lung cancer.

Recommended Dilution

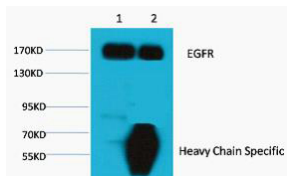
WB: 1:1000-3000

Not yet tested in other applications.

Images



Western blot analysis of 1) A431. 2) HeLa diluted at 1:2000.



1 Input: HeLa Cell Lysate 2 IP product: IP dilute 1:200 Western blot analysis: primary antibody : 1:1.000 Secondary antibody: Goat anti-Mouse IgG, Heavy Chain Specific(S003), 1:5,000

Storage

-20°C for one year

501 Changsheng S Rd, Nanhu Dist, Jiaxing, Zhejiang, China

Tel: 86 21 31007137 | E-mail: save@bt-laboratory.com | www.bt-laboratory.com