

Emt Monoclonal Antibody

Description

Product type	Primary Antibody
Code	BT-MCA0474
Host	Mouse
Isotype	IgG
Size	50ul, 100ul
Immunogen	Purified recombinant fragment of human Emt expressed in E. Coli.
Mol wt	N/A
Species reactivity	Human
Clonality	Monoclonal
Recommended application	WB, IF, ICC, FCM, ELISA
Concentration	1 mg/ml
Full name	Tyrosine-protein kinase ITK,TSK
Synonyms	ITK; EMT; LYK; Tyrosine-protein kinase ITK; TSK; Interleukin-2-inducible T-cell kinase; IL-2-inducible T-cell kinase; Kinase EMT; T-cell-specific kinase; Tyrosine-protein kinase Lyk

This product is for research use only, not for use in human, therapeutic or diagnostic procedure.

Background

This gene encodes an intracellular tyrosine kinase expressed in T-cells. The protein contains both SH2 and SH3 domains which are often found in intracellular kinases. It is thought to play a role in T-cell proliferation and differentiation.

Recommended Dilution

ELISA: 1:10000

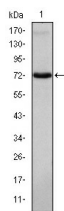
FC: 1:200 - 1:400

IF: 1:200 - 1:1000

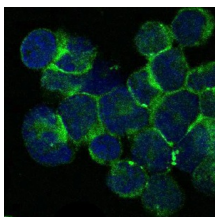
WB: 1:500 - 1:2000

Not yet tested in other applications.

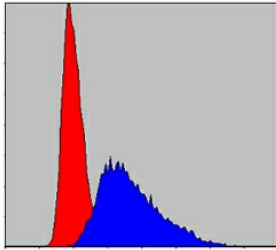
Images



Western Blot analysis using Emt Monoclonal antibody against Jurkat cell lysate.



Immunofluorescence analysis of Jurkat cells using Emt Monoclonal antibody (green). Blue: DRAQ5 fluorescent DNA dye.



Flow cytometric analysis of Jurkat cells using Emt Monoclonal antibody (blue) and negative control (red).

Storage

-20°C for one year

501 Changsheng S Rd, Nanhu Dist, Jiaxing, Zhejiang, China

Tel: 86 21 31007137 | E-mail: save@bt-laboratory.com | www.bt-laboratory.com