

EphA10 Monoclonal Antibody

Description

Product type	Primary Antibody
Code	BT-MCA0480
Host	Mouse
Isotype	IgG
Size	50ul, 100ul
Immunogen	Purified recombinant fragment of human EphA10 expressed in E. Coli.
Mol wt	N/A
Species reactivity	Human
Clonality	Monoclonal
Recommended application	WB, ELISA
Concentration	1 mg/ml
Full name	Ephrin type-A receptor 10
Synonyms	EPHA10; Ephrin type-A receptor 10

This product is for research use only, not for use in human, therapeutic or diagnostic procedure.

Background

Ephrin receptors, the largest subfamily of receptor tyrosine kinases (RTKs), and their ephrin ligands are important mediators of cell-cell communication regulating cell attachment, shape, and mobility in neuronal and epithelial cells (Aasheim et al., 2005 [PubMed 15777695]). See MIM 179610 for additional background on Eph receptors and ephrins.[supplied by OMIM, Mar 2008],

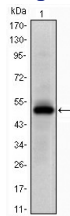
Recommended Dilution

ELISA: 1:10000

WB: 1:500 - 1:2000

Not yet tested in other applications.

Images



Western Blot analysis using EphA10 Monoclonal antibody against human EphA10 (AA: 34-295) recombinant protein.

Storage

-20°C for one year

501 Changsheng S Rd, Nanhu Dist, Jiaxing, Zhejiang, China

Tel: 86 21 31007137 | E-mail: save@bt-laboratory.com | www.bt-laboratory.com