

EphA8 Monoclonal Antibody

Description

Product type	Primary Antibody
Code	BT-MCA0487
Host	Mouse
Isotype	IgG
Size	50ul, 100ul
Immunogen	Purified recombinant fragment of EphA8 (aa70-150) expressed in E. Coli.
Mol wt	N/A
Species reactivity	Human
Clonality	Monoclonal
Recommended application	WB, ELISA
Concentration	1 mg/ml
Full name	Ephrin type-A receptor 8
Synonyms	EPHA8; EEK; HEK3; KIAA1459; Ephrin type-A receptor 8; EPH- and ELK-related kinase; EPH-like kinase 3; EK3; hEK3; Tyrosine-protein kinase receptor EEK

This product is for research use only, not for use in human, therapeutic or diagnostic procedure.

Background

This gene encodes a member of the ephrin receptor subfamily of the protein-tyrosine kinase family. EPH and EPH-related receptors have been implicated in mediating developmental events, particularly in the nervous system. Receptors in the EPH subfamily typically have a single kinase domain and an extracellular region containing a Cys-rich domain and 2 fibronectin type III repeats. The ephrin receptors are divided into 2 groups based on the similarity of their extracellular domain sequences and their affinities for binding ephrin-A and ephrin-B ligands. The protein encoded by this gene functions as a receptor for ephrin A2, A3 and A5 and plays a role in short-range contact-mediated axonal guidance during development of the mammalian nervous system.

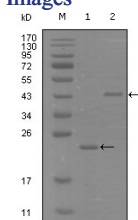
Recommended Dilution

ELISA: 1:10000

WB: 1:500 - 1:2000

Not yet tested in other applications.

Images



Western Blot analysis using EphA8 Monoclonal antibody against truncated Trx-EphA8 recombinant protein (1) and truncated MBP-EphA8(aa70-150) recombinant protein (2).

Storage

-20°C for one year