

Epsilon Tubulin mouse Monoclonal Antibody(2B3)

Description

Product type	Primary Antibody
Code	BT-MCA0497
Host	Mouse
Isotype	IgG
Size	20ul, 50ul, 100ul
Immunogen	Synthetic Peptide of Epsilon Tubulin
Mol wt	N/A
Species reactivity	Human,Rat,Mouse
Clonality	Monoclonal
Recommended application	WB
Concentration	1 mg/ml
Full name	Epsilon Tubulin
Synonyms	Tubulin epsilon chain; Epsilon-tubulin; TUBE1; TUBE

This product is for research use only, not for use in human, therapeutic or diagnostic procedure.

Background

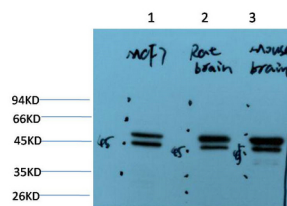
This gene encodes a member of the tubulin superfamily. This protein localizes to the centriolar sub-distal appendages that are associated with the older of the two centrioles after centrosome duplication. This protein plays a central role in organization of the microtubules during centriole duplication. A pseudogene of this gene is found on chromosome 5.

Recommended Dilution

WB: 1:1000-2000

Not yet tested in other applications.

Images



Western blot analysis of 1) MCF7Cell Lysate, 2) Rat Brain Tissue Lysate, 3) Mouse Brain Tissue Lysate using Epsilon Tubulin Mouse Monoclonal antibody diluted at 1:2000.

Storage

-20°C for one year