

Epsilon Tubulin mouse Monoclonal Antibody(3C1)

Description

Product type	Primary Antibody
Code	BT-MCA0498
Host	Mouse
Isotype	IgG
Size	20ul, 50ul, 100ul
Immunogen	Synthetic Peptide of Epsilon Tubulin
Mol wt	N/A
Species reactivity	Human,Rat,Mouse
Clonality	Monoclonal
Recommended application	IHC-p, IF
Concentration	1 mg/ml
Full name	Epsilon Tubulin
Synonyms	Tubulin epsilon chain; Epsilon-tubulin; TUBE1; TUBE

This product is for research use only, not for use in human, therapeutic or diagnostic procedure.

Background

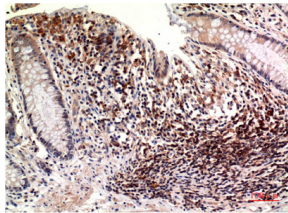
This gene encodes a member of the tubulin superfamily. This protein localizes to the centriolar sub-distal appendages that are associated with the older of the two centrioles after centrosome duplication. This protein plays a central role in organization of the microtubules during centriole duplication. A pseudogene of this gene is found on chromosome 5.

Recommended Dilution

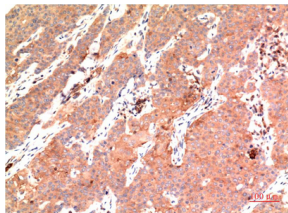
IHC: 1:100-200

Not yet tested in other applications.

Images



Immunohistochemical analysis of paraffin-embedded Human Colon Carcinoma Tissue using Epsilon Tubulin Mouse Monoclonal antibody diluted at 1:200.



Immunohistochemical analysis of paraffin-embedded Human Breast Carcinoma Tissue using Epsilon Tubulin Mouse Monoclonal antibody diluted at 1:200.

Storage

-20°C for one year