

ErbB-3 Monoclonal Antibody

Description

Product type	Primary Antibody
Code	BT-MCA0503
Host	Mouse
Isotype	IgG
Size	50ul, 100ul
Immunogen	Purified recombinant extracellular fragment of human ErbB-3 (aa22-369) fused with hIgGFc tag expressed in HEK293 cells.
Mol wt	N/A
Species reactivity	Human
Clonality	Monoclonal
Recommended application	WB, IF, ICC, ELISA
Concentration	1 mg/ml
Full name	Receptor tyrosine-protein kinase erbB-3
Synonyms	ERBB3; HER3; Receptor tyrosine-protein kinase erbB-3; Proto-oncogene-like protein c-ErbB-3; Tyrosine kinase-type cell surface receptor HER3

This product is for research use only, not for use in human, therapeutic or diagnostic procedure.

Background

This gene encodes a member of the epidermal growth factor receptor (EGFR) family of receptor tyrosine kinases. This membrane-bound protein has a neuregulin binding domain but not an active kinase domain. It therefore can bind this ligand but not convey the signal into the cell through protein phosphorylation. However, it does form heterodimers with other EGF receptor family members which do have kinase activity. Heterodimerization leads to the activation of pathways which lead to cell proliferation or differentiation. Amplification of this gene and/or overexpression of its protein have been reported in numerous cancers, including prostate, bladder, and breast tumors. Alternate transcriptional splice variants encoding different isoforms have been characterized. One isoform lacks the intermembrane region and is secreted outside the cell. This form acts to modulate the activity of the m

Recommended Dilution

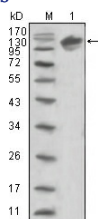
ELISA: 1:10000

IF: 1:200 - 1:1000

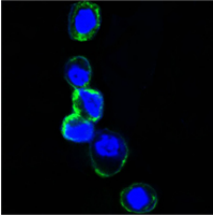
WB: 1:500 - 1:2000

Not yet tested in other applications.

Images



Western Blot analysis using ErbB-3 Monoclonal antibody against human ERBB3 (aa22-369)-hIgGFc trasfected HEK293 cell lysate (1).



Confocal immunofluorescence analysis of HEK293 cells trasfected with extracellular ERBB3 (aa22-369)-hIgGFc using ErbB-3 Monoclonal antibody (green). Blue: DRAQ5 fluorescent DNA dye.

Storage

-20°C for one year

501 Changsheng S Rd, Nanhu Dist, Jiaxing, Zhejiang, China

Tel: 86 21 31007137 | E-mail: save@bt-laboratory.com | www.bt-laboratory.com