

ERK 1 Monoclonal Antibody

Description

Product type	Primary Antibody
Code	BT-MCA0505
Host	Mouse
Isotype	IgG
Size	50ul, 100ul
Immunogen	Purified recombinant fragment of human ERK 1 expressed in E. Coli.
Mol wt	N/A
Species reactivity	Human,Mouse,Rat,Monkey
Clonality	Monoclonal
Recommended application	WB, IHC-p, IF, ICC, FCM, ELISA
Concentration	1 mg/ml
Full name	Mitogen-activated protein kinase 3
Synonyms	MAPK3; ERK1; PRKM3; Mitogen-activated protein kinase 3; MAP kinase 3; MAPK 3; ERT2; Extracellular signal-regulated kinase 1; ERK-1; Insulin-stimulated MAP2 kinase; MAP kinase isoform p44; p44-MAPK; Microtubule-associated protein 2 kinase;

This product is for research use only, not for use in human, therapeutic or diagnostic procedure.

Background

The protein encoded by this gene is a member of the MAP kinase family. MAP kinases, also known as extracellular signal-regulated kinases (ERKs), act in a signaling cascade that regulates various cellular processes such as proliferation, differentiation, and cell cycle progression in response to a variety of extracellular signals. This kinase is activated by upstream kinases, resulting in its translocation to the nucleus where it phosphorylates nuclear targets. Alternatively spliced transcript variants encoding different protein isoforms have been described.

Recommended Dilution

FC: 1:200 - 1:400

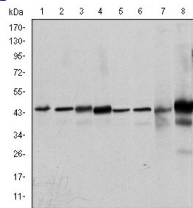
IF: 1:200 - 1:1000

IHC: 1:200 - 1:1000

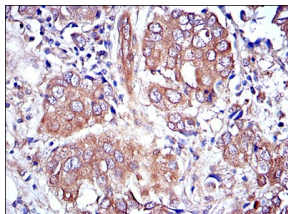
WB: 1:500 - 1:2000

Not yet tested in other applications.

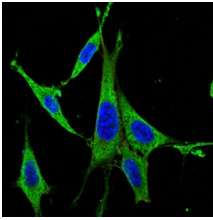
Images



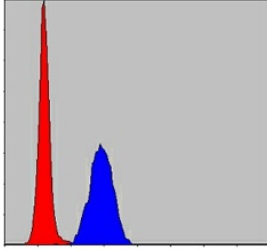
Western Blot analysis using ERK 1 Monoclonal antibody against HeLa (1) Jurkat (2) RAW264.7 (3) HEK293 (4) K562 (5) NIH/3T3 (6) Cos7 (7) and PC-12 (8) cell lysate.



Immunohistochemistry analysis of paraffin-embedded breast cancer tissues with DAB staining using ERK 1 Monoclonal antibody.



Immunofluorescence analysis of NIH/3T3 cells using ERK 1 Monoclonal antibody (green). Blue: DRAQ5 fluorescent DNA dye. Red: Actin filaments have been labeled with Alexa Fluor-555 phalloidin.



Flow cytometric analysis of HeLa cells using ERK 1 Monoclonal antibody (blue) and negative control (red).

Storage

-20°C for one year

501 Changsheng S Rd, Nanhu Dist, Jiaxing, Zhejiang, China

Tel: 86 21 31007137 | E-mail: save@bt-laboratory.com | www.bt-laboratory.com