

## ERK1/2 mouse Monoclonal Antibody(1H4)

### Description

Product type	Primary Antibody
Code	BT-MCA0512
Host	Mouse
Isotype	IgG
Size	20ul, 50ul, 100ul
Immunogen	Synthetic Peptide of ERK1/2 at AA range of 140-220
Mol wt	N/A
Species reactivity	Human,Rat,Mouse
Clonality	Monoclonal
Recommended application	WB, IHC-p, IF
Concentration	1 mg/ml
Full name	Mitogen-activated protein kinase 3
Synonyms	MK03; MAPK3; MAPK1

This product is for research use only, not for use in human, therapeutic or diagnostic procedure.

### Background

The protein encoded by this gene is a member of the MAP kinase family. MAP kinases, also known as extracellular signal-regulated kinases (ERKs), act in a signaling cascade that regulates various cellular processes such as proliferation, differentiation, and cell cycle progression in response to a variety of extracellular signals. This kinase is activated by upstream kinases, resulting in its translocation to the nucleus where it phosphorylates nuclear targets. Alternatively spliced transcript variants encoding different protein isoforms have been described.

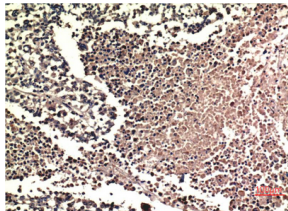
### Recommended Dilution

IHC: 1:100-200

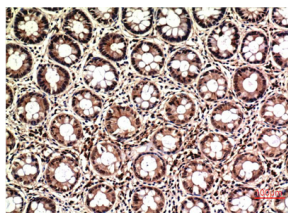
WB: 1:1000-2000

Not yet tested in other applications.

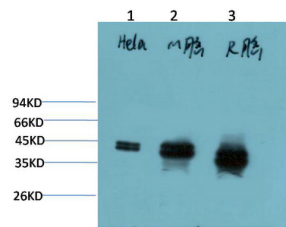
### Images



Immunohistochemical analysis of paraffin-embedded Human Lung Carcinoma Tissue using ERK1/2 Mouse Monoclonal antibody diluted at 1:200.



Immunohistochemical analysis of paraffin-embedded Human Colon Carcinoma Tissue using ERK1/2 Mouse Monoclonal antibody diluted at 1:200.



Western blot analysis of 1) HeLa Cell Lysate, 2) Mouse Brain Tissue Lysate, 3) Rat Brain Tissue Lysate using ERK1/2 Mouse Monoclonal antibody diluted at 1:2000.

### Storage

-20°C for one year

501 Changsheng S Rd, Nanhu Dist, Jiaxing, Zhejiang, China

Tel: 86 21 31007137 | E-mail: [save@bt-laboratory.com](mailto:save@bt-laboratory.com) | [www.bt-laboratory.com](http://www.bt-laboratory.com)