

## Fes Monoclonal Antibody

### Description

<b>Product type</b>	Primary Antibody
<b>Code</b>	BT-MCA0531
<b>Host</b>	Mouse
<b>Isotype</b>	IgG
<b>Size</b>	50ul, 100ul
<b>Immunogen</b>	Purified recombinant fragment of Fer expressed in E. Coli.
<b>Mol wt</b>	N/A
<b>Species reactivity</b>	Human
<b>Clonality</b>	Monoclonal
<b>Recommended application</b>	WB, IHC-p, IF, ELISA
<b>Concentration</b>	1 mg/ml
<b>Full name</b>	Tyrosine-protein kinase Fes,Fps
<b>Synonyms</b>	FES; FPS; Tyrosine-protein kinase Fes; Fps; Feline sarcoma; Fujinami avian sarcoma oncogene homolog; Proto-oncogene c-Fes; Proto-oncogene c-Fps; p93c-fes

**This product is for research use only, not for use in human, therapeutic or diagnostic procedure.**

### Background

This gene encodes the human cellular counterpart of a feline sarcoma retrovirus protein with transforming capabilities. The gene product has tyrosine-specific protein kinase activity and that activity is required for maintenance of cellular transformation. Its chromosomal location has linked it to a specific translocation event identified in patients with acute promyelocytic leukemia but it is also involved in normal hematopoiesis as well as growth factor and cytokine receptor signaling. Alternative splicing results in multiple variants encoding different isoforms.

### Recommended Dilution

ELISA: 1:10000

IHC: 1:200 - 1:1000

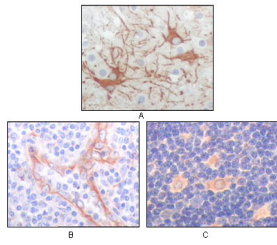
WB: 1:500 - 1:2000

Not yet tested in other applications.

### Images



Western Blot analysis using Fes Monoclonal antibody against truncated Fes recombinant protein.



Immunohistochemistry analysis of paraffin-embedded human cerebrum tumor (A), endothelium of vessel (B), lymphocyte of thymus(C), showing cytoplasmic localization with DAB staining using Fes Monoclonal antibody.

### Storage

-20°C for one year

501 Changsheng S Rd, Nanhu Dist, Jiaxing, Zhejiang, China

Tel: 86 21 31007137 | E-mail: [save@bt-laboratory.com](mailto:save@bt-laboratory.com) | [www.bt-laboratory.com](http://www.bt-laboratory.com)