

## G6PD Monoclonal Antibody

### Description

<b>Product type</b>	Primary Antibody
<b>Code</b>	BT-MCA0576
<b>Host</b>	Mouse
<b>Isotype</b>	IgG
<b>Size</b>	50ul, 100ul
<b>Immunogen</b>	Purified recombinant fragment of human G6PD expressed in E. Coli.
<b>Mol wt</b>	N/A
<b>Species reactivity</b>	Human
<b>Clonality</b>	Monoclonal
<b>Recommended application</b>	WB, IHC-p, IF, FCM, ELISA
<b>Concentration</b>	1 mg/ml
<b>Full name</b>	Glucose-6-phosphate 1-dehydrogenase
<b>Synonyms</b>	G6PD; Glucose-6-phosphate 1-dehydrogenase; G6PD

This product is for research use only, not for use in human, therapeutic or diagnostic procedure.

### Background

This gene encodes glucose-6-phosphate dehydrogenase. This protein is a cytosolic enzyme encoded by a housekeeping X-linked gene whose main function is to produce NADPH, a key electron donor in the defense against oxidizing agents and in reductive biosynthetic reactions. G6PD is remarkable for its genetic diversity. Many variants of G6PD, mostly produced from missense mutations, have been described with wide ranging levels of enzyme activity and associated clinical symptoms. G6PD deficiency may cause neonatal jaundice, acute hemolysis, or severe chronic non-spherocytic hemolytic anemia. Two transcript variants encoding different isoforms have been found for this gene.

### Recommended Dilution

ELISA: 1:10000

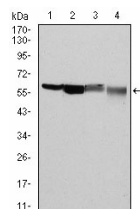
FC: 1:200 - 1:400

IHC: 1:200 - 1:1000

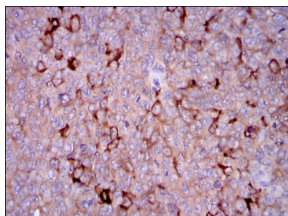
WB: 1:500 - 1:2000

Not yet tested in other applications.

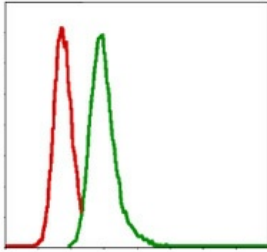
### Images



Western Blot analysis using G6PD Monoclonal antibody against HeLa (1) MCF-7 (2) Jurkat (3) and K562 (4) cell lysate.



Immunohistochemistry analysis of paraffin-embedded ovarian cancer tissues with DAB staining using G6PD Monoclonal antibody.



Flow cytometric analysis of MCF-7 cells using G6PD Monoclonal antibody (green) and negative control (red).

#### Storage

-20°C for one year

501 Changsheng S Rd, Nanhu Dist, Jiaxing, Zhejiang, China

Tel: 86 21 31007137 | E-mail: [save@bt-laboratory.com](mailto:save@bt-laboratory.com) | [www.bt-laboratory.com](http://www.bt-laboratory.com)