

GABP- Alpha Monoclonal Antibody

Description

Product type	Primary Antibody
Code	BT-MCA0578
Host	Mouse
Isotype	IgG
Size	50ul, 100ul
Immunogen	Purified recombinant fragment of human GABP- α (aa120-190) expressed in E. Coli.
Mol wt	N/A
Species reactivity	Human,Mouse
Clonality	Monoclonal
Recommended application	WB, IF, ICC, ELISA
Concentration	1 mg/ml
Full name	GA-binding protein alpha chain
Synonyms	GABPA; E4TF1A; GA-binding protein alpha chain; GABP subunit alpha; Nuclear respiratory factor 2 subunit alpha; Transcription factor E4TF1-60

This product is for research use only, not for use in human, therapeutic or diagnostic procedure.

Background

This gene encodes one of three GA-binding protein transcription factor subunits which functions as a DNA-binding subunit. Since this subunit shares identity with a subunit encoding the nuclear respiratory factor 2 gene, it is likely involved in activation of cytochrome oxidase expression and nuclear control of mitochondrial function. This subunit also shares identity with a subunit constituting the transcription factor E4TF1, responsible for expression of the adenovirus E4 gene. Because of its chromosomal localization and ability to form heterodimers with other polypeptides, this gene may play a role in the Down Syndrome phenotype. Two transcript variants encoding the same protein have been found for this gene.

Recommended Dilution

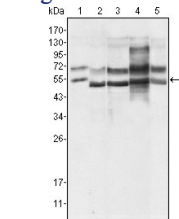
ELISA: 1:10000

IF: 1:200 - 1:1000

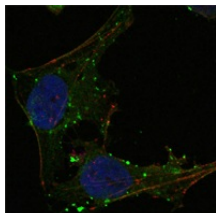
WB: 1:500 - 1:2000

Not yet tested in other applications.

Images



Western Blot analysis using GABP-Alpha Monoclonal antibody against HeLa (1) A549 (2) MCF-7 (3) NIH/3T3 (4) and SMMC-7721 (5) cell lysate.



Confocal immunofluorescence analysis of HeLa cells using GABP-Alpha Monoclonal antibody (green). Red: Actin filaments have been labeled using DY-554 phalloidin. Blue: DRAQ5 fluorescent DNA dye.

Storage

-20°C for one year

501 Changsheng S Rd, Nanhu Dist, Jiaxing, Zhejiang, China

Tel: 86 21 31007137 | E-mail: save@bt-laboratory.com | www.bt-laboratory.com