

## Gamma Tubulin mouse Monoclonal Antibody(4A4)

### Description

<b>Product type</b>	Primary Antibody
<b>Code</b>	BT-MCA0586
<b>Host</b>	Mouse
<b>Isotype</b>	IgG
<b>Size</b>	20ul, 50ul, 100ul
<b>Immunogen</b>	Synthetic Peptide of Gamma Tubulin
<b>Mol wt</b>	N/A
<b>Species reactivity</b>	Human
<b>Clonality</b>	Monoclonal
<b>Recommended application</b>	IF, ICC, IHC-p
<b>Concentration</b>	1 mg/ml
<b>Full name</b>	TUBG1
<b>Synonyms</b>	TUBG1

This product is for research use only, not for use in human, therapeutic or diagnostic procedure.

### Background

This gene encodes a member of the tubulin superfamily. The encoded protein localizes to the centrosome where it binds to microtubules as part of a complex referred to as the gamma-tubulin ring complex. The protein mediates microtubule nucleation and is required for microtubule formation and progression of the cell cycle. A pseudogene of this gene is found on chromosome 7.

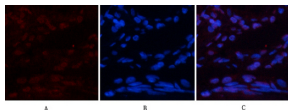
### Recommended Dilution

IF: 1:50-200

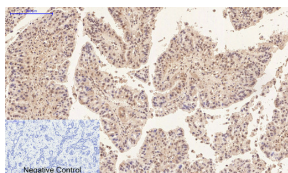
WB: 500-2000 1:100-200

Not yet tested in other applications.

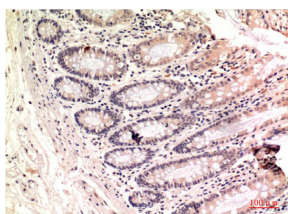
### Images



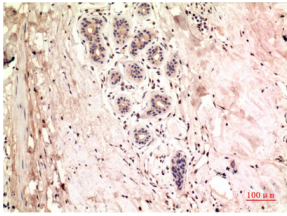
Immunofluorescence analysis of human-lung tissue. 1. Gamma Tubulin Mouse Monoclonal antibody(4A4)(red) was diluted at 1:200(4°C, overnight). 2. Cy3 labeled Secondary antibody was diluted at 1:300(room temperature, 50min). 3. Picture B: DAPI(blue) 10min. Picture A: Target. Picture B: DAPI. Picture C: merge of A+B



Immunohistochemical analysis of paraffin-embedded Human-liver-cancer tissue. 1. Gamma Tubulin Mouse Monoclonal antibody(4A4) was diluted at 1:200(4°C, overnight). 2. Sodium citrate pH 6.0 was used for antibody retrieval(>98°C, 20min). 3. Secondary antibody was diluted at 1:200(room temperature, 30min). Negative control was used by secondary antibody only.



Immunohistochemical analysis of paraffin-embedded Human Colon Carcinoma Tissue using gamma Tubulin Mouse Monoclonal antibody diluted at 1:200.



Immunohistochemical analysis of paraffin-embedded Human Breast Carcinoma Tissue using gamma Tutulin Mouse Monoclonal antibody diluted at 1:200.

### Storage

-20°C for one year

501 Changsheng S Rd, Nanhu Dist, Jiaxing, Zhejiang, China

Tel: 86 21 31007137 | E-mail: [save@bt-laboratory.com](mailto:save@bt-laboratory.com) | [www.bt-laboratory.com](http://www.bt-laboratory.com)