

## Gamma Tubulin mouse Monoclonal Antibody(7C1)

### Description

Product type	Primary Antibody
Code	BT-MCA0589
Host	Mouse
Isotype	IgG
Size	20ul, 50ul, 100ul
Immunogen	Synthetic Peptide of Gamma Tubulin
Mol wt	N/A
Species reactivity	Human
Clonality	Monoclonal
Recommended application	IHC-p, IF
Concentration	1 mg/ml
Full name	TUBG1
Synonyms	TUBG1

This product is for research use only, not for use in human, therapeutic or diagnostic procedure.

### Background

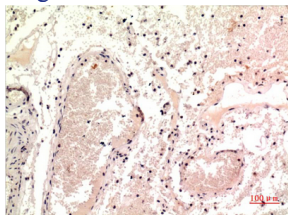
This gene encodes a member of the tubulin superfamily. The encoded protein localizes to the centrosome where it binds to microtubules as part of a complex referred to as the gamma-tubulin ring complex. The protein mediates microtubule nucleation and is required for microtubule formation and progression of the cell cycle. A pseudogene of this gene is found on chromosome 7.

### Recommended Dilution

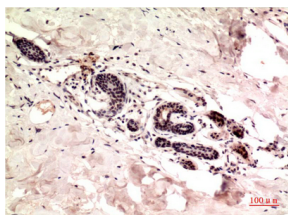
IHC: 1:100-200

Not yet tested in other applications.

### Images



Immunohistochemical analysis of paraffin-embedded Human Colon Carcinoma Tissue using gamma Tubulin Mouse Monoclonal antibody diluted at 1:200.



Immunohistochemical analysis of paraffin-embedded Human Breast Carcinoma Tissue using gamma Tubulin Mouse Monoclonal antibody diluted at 1:200.

### Storage

-20°C for one year