

GCG Monoclonal Antibody

Description

Product type	Primary Antibody
Code	BT-MCA0612
Host	Mouse
Isotype	IgG
Size	50ul, 100ul
Immunogen	Purified recombinant fragment of human GCG expressed in E. Coli.
Mol wt	N/A
Species reactivity	Human
Clonality	Monoclonal
Recommended application	WB, ELISA
Concentration	1 mg/ml
Full name	Glucagon
Synonyms	GCG; Glucagon

This product is for research use only, not for use in human, therapeutic or diagnostic procedure.

Background

The protein encoded by this gene is actually a preproprotein that is cleaved into four distinct mature peptides. One of these, glucagon, is a pancreatic hormone that counteracts the glucose-lowering action of insulin by stimulating glycogenolysis and gluconeogenesis. Glucagon is a ligand for a specific G-protein linked receptor whose signalling pathway controls cell proliferation. Two of the other peptides are secreted from gut endocrine cells and promote nutrient absorption through distinct mechanisms. Finally, the fourth peptide is similar to glicentin, an active enteroglucagon.

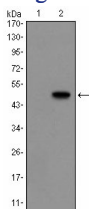
Recommended Dilution

ELISA: 1:10000

WB: 1:500 - 1:2000

Not yet tested in other applications.

Images



Western Blot analysis using GCG Monoclonal antibody against HEK293 (1) and GCG-hIgGFc transfected HEK293 (2) cell lysate.

Storage

-20°C for one year