

Glycogen Synthase 1 Monoclonal Antibody

Description

Product type	Primary Antibody
Code	BT-MCA0626
Host	Mouse
Isotype	IgG
Size	50ul, 100ul
Immunogen	Purified recombinant fragment of human Glycogen Synthase 1 expressed in E. Coli.
Mol wt	N/A
Species reactivity	Human
Clonality	Monoclonal
Recommended application	WB, FCM, ELISA
Concentration	1 mg/ml
Full name	Glycogen (starch) synthase muscle
Synonyms	GYS1; GYS; Glycogen (starch) synthase; muscle

This product is for research use only, not for use in human, therapeutic or diagnostic procedure.

Background

The protein encoded by this gene catalyzes the addition of glucose monomers to the growing glycogen molecule through the formation of alpha-1,4-glycoside linkages. Mutations in this gene are associated with muscle glycogen storage disease. Alternatively spliced transcript variants encoding different isoforms have been found for this gene.

Recommended Dilution

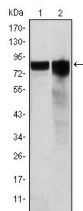
ELISA: 1:10000

FC: 1:200 - 1:400

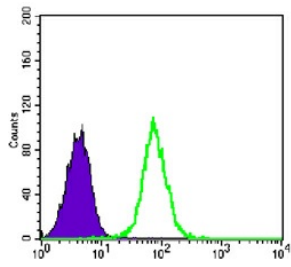
WB: 1:500 - 1:2000

Not yet tested in other applications.

Images



Western Blot analysis using Glycogen Synthase 1 Monoclonal antibody against HeLa (1) and HEK293 (2) cell lysate.



Flow cytometric analysis of K562 cells using Glycogen Synthase 1 Monoclonal antibody (green) and negative control (purple).

Storage

-20°C for one year

501 Changsheng S Rd, Nanhu Dist, Jiaxing, Zhejiang, China

Tel: 86 21 31007137 | E-mail: save@bt-laboratory.com | www.bt-laboratory.com