

GPI Monoclonal Antibody

Description

| | |
|--------------------------------|---|
| Product type | Primary Antibody |
| Code | BT-MCA0628 |
| Host | Mouse |
| Isotype | IgG |
| Size | 50ul, 100ul |
| Immunogen | Purified recombinant fragment of human GPI expressed in E. Coli. |
| Mol wt | N/A |
| Species reactivity | Human |
| Clonality | Monoclonal |
| Recommended application | WB, IHC-p, IF, ICC, ELISA |
| Concentration | 1 mg/ml |
| Full name | Glucose-6-phosphate isomerase |
| Synonyms | GPI; Glucose-6-phosphate isomerase; GPI; Autocrine motility factor; AMF; Neuroleukin; NLK; Phosphoglucose isomerase; PGI; Phosphohexose isomerase; PHI; Sperm antigen 36; SA-36 |

This product is for research use only, not for use in human, therapeutic or diagnostic procedure.

Background

This gene encodes a member of the glucose phosphate isomerase protein family. The encoded protein has been identified as a moonlighting protein based on its ability to perform mechanistically distinct functions. In the cytoplasm, the gene product functions as a glycolytic enzyme (glucose-6-phosphate isomerase) that interconverts glucose-6-phosphate and fructose-6-phosphate. Extracellularly, the encoded protein (also referred to as neuroleukin) functions as a neurotrophic factor that promotes survival of skeletal motor neurons and sensory neurons, and as a lymphokine that induces immunoglobulin secretion. The encoded protein is also referred to as autocrine motility factor based on an additional function as a tumor-secreted cytokine and angiogenic factor. Defects in this gene are the cause of nonspherocytic hemolytic anemia and a severe enzyme deficiency can be associated with hydrops fetalis

Recommended Dilution

ELISA: 1:10000

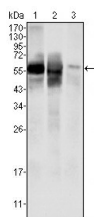
IF: 1:200 - 1:1000

IHC: 1:200 - 1:1000

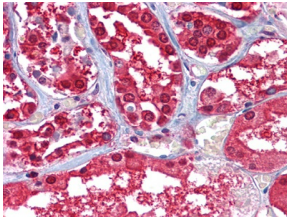
WB: 1:500 - 1:2000

Not yet tested in other applications.

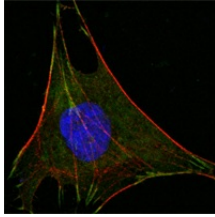
Images



Western Blot analysis using GPI Monoclonal antibody against HepG2 (1) SMMC-7721 (2) cell lysate and rat liver tissues lysate (3).



Immunohistochemistry analysis of paraffin-embedded human Kidney tissues with AEC staining using GPI Monoclonal antibody.



Confocal immunofluorescence analysis of L-02 cells using GPI Monoclonal antibody (green). Red: Actin filaments have been labeled with DY-554 phalloidin. Blue: DRAQ5 fluorescent DNA dye.

Storage

-20°C for one year

501 Changsheng S Rd, Nanhu Dist, Jiaxing, Zhejiang, China

Tel: 86 21 31007137 | E-mail: save@bt-laboratory.com | www.bt-laboratory.com