

GRK 2 Monoclonal Antibody

Description

Product type	Primary Antibody
Code	BT-MCA0630
Host	Mouse
Isotype	IgG
Size	50ul, 100ul
Immunogen	Purified recombinant fragment of human GRK 2 expressed in E. Coli.
Mol wt	N/A
Species reactivity	Human,Mouse,Rat,Monkey
Clonality	Monoclonal
Recommended application	WB, IHC-p, IF, ICC, ELISA
Concentration	1 mg/ml
Full name	Beta-adrenergic receptor kinase 1
Synonyms	ADRBK1; BARK; BARK1; GRK2; Beta-adrenergic receptor kinase 1; Beta-ARK-1; G-protein coupled receptor kinase 2

This product is for research use only, not for use in human, therapeutic or diagnostic procedure.

Background

The product of this gene phosphorylates the beta-2-adrenergic receptor and appears to mediate agonist-specific desensitization observed at high agonist concentrations. This protein is an ubiquitous cytosolic enzyme that specifically phosphorylates the activated form of the beta-adrenergic and related G-protein-coupled receptors. Abnormal coupling of beta-adrenergic receptor to G protein is involved in the pathogenesis of the failing heart.

Recommended Dilution

ELISA: 1:10000

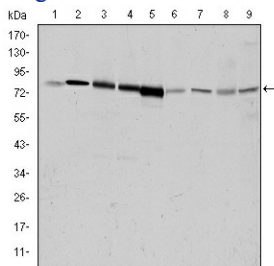
IF: 1:200 - 1:1000

IHC: 1:200 - 1:1000

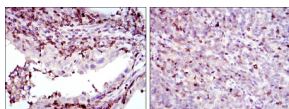
WB: 1:500 - 1:2000

Not yet tested in other applications.

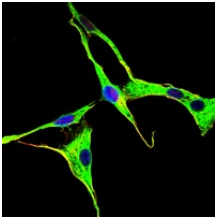
Images



Western Blot analysis using GRK 2 Monoclonal antibody against HeLa (1) Jurkat (2) MOLT4 (3) RAJI (4) THP-1 (5) L1210 (6) Cos7 (7) PC-12 (8) and NIH/3T3 (9) cell lysate.



Immunohistochemistry analysis of paraffin-embedded endometrial cancer tissues (left) and cervical cancer tissues (right) with DAB staining using GRK 2 Monoclonal antibody.



Immunofluorescence analysis of NIH/3T3 cells using GRK 2 Monoclonal antibody (green). Blue: DRAQ5 fluorescent DNA dye.

Storage

-20°C for one year

501 Changsheng S Rd, Nanhu Dist, Jiaxing, Zhejiang, China

Tel: 86 21 31007137 | E-mail: save@bt-laboratory.com | www.bt-laboratory.com