

GSK3Beta Monoclonal Antibody

Description

Product type	Primary Antibody
Code	BT-MCA0636
Host	Mouse
Isotype	IgG
Size	50ul, 100ul
Immunogen	Purified recombinant fragment of human GSK3Beta expressed in E. Coli.
Mol wt	N/A
Species reactivity	Human,Mouse,Rat,Monkey
Clonality	Monoclonal
Recommended application	WB, IHC-p, IF, ICC, FCM, ELISA
Concentration	1 mg/ml
Full name	Glycogen synthase kinase-3 beta
Synonyms	GSK3B; Glycogen synthase kinase-3 beta; GSK-3 beta; Serine; threonine-protein kinase GSK3B

This product is for research use only, not for use in human, therapeutic or diagnostic procedure.

Background

The protein encoded by this gene is a serine-threonine kinase, belonging to the glycogen synthase kinase subfamily. It is involved in energy metabolism, neuronal cell development, and body pattern formation. Polymorphisms in this gene have been implicated in modifying risk of Parkinson disease, and studies in mice show that overexpression of this gene may be relevant to the pathogenesis of Alzheimer disease. Alternatively spliced transcript variants encoding different isoforms have been found for this gene.

Recommended Dilution

FC: 1:200 - 1:400

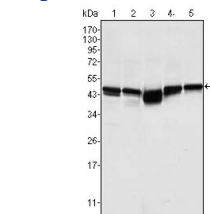
IF: 1:200 - 1:1000

IHC: 1:200 - 1:1000

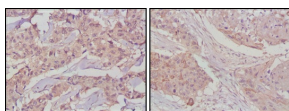
WB: 1:500 - 1:2000

Not yet tested in other applications.

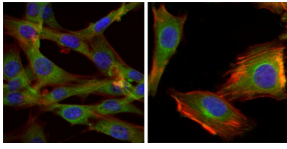
Images



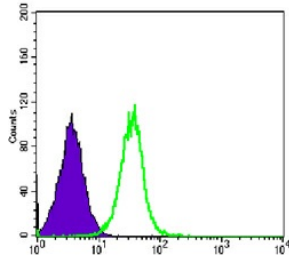
Western Blot analysis using GSK3Beta Monoclonal antibody against A549 (1) K562 (2) PC-12 (3) NIH/3T3 (4) and HEK293 (5) cell lysate.



Immunohistochemistry analysis of paraffin-embedded human lung cancer (left) and breast cancer tissues (right) with DAB staining using GSK3Beta Monoclonal antibody.



Immunofluorescence analysis of NIH/3T3 (left) and U251 (right) cells using GSK3Beta Monoclonal antibody (green). Blue: DRAQ5 fluorescent DNA dye. Red: Actin filaments have been labeled with Alexa Fluor-555 phalloidin.



Flow cytometric analysis of HeLa cells using GSK3Beta Monoclonal antibody (green) and negative control (purple).

Storage

-20°C for one year

501 Changsheng S Rd, Nanhu Dist, Jiaxing, Zhejiang, China

Tel: 86 21 31007137 | E-mail: save@bt-laboratory.com | www.bt-laboratory.com