

HLX1 Monoclonal Antibody

Description

Product type	Primary Antibody
Code	BT-MCA0727
Host	Mouse
Isotype	IgG
Size	50ul, 100ul
Immunogen	Purified recombinant human HLX1 (C-terminus) protein fragments expressed in E.coli.
Mol wt	N/A
Species reactivity	Human,Mouse,Rat,Bovine,Dog,Pig
Clonality	Monoclonal
Recommended application	WB
Concentration	1 mg/ml
Full name	H2.0-like homeobox protein
Synonyms	HLX; HLX1; H2.0-like homeobox protein; Homeobox protein HB24; Homeobox protein HLX1

This product is for research use only, not for use in human, therapeutic or diagnostic procedure.

Background

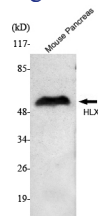
Transcription factor required for TBX21/T-bet-dependent maturation of Th1 cells as well as maintenance of Th1-specific gene expression. Involved in embryogenesis and hematopoiesis.,sequence caution:Translation N-terminally extended.,similarity:Belongs to the H2.0 homeobox family.,similarity:Contains 1 homeobox DNA-binding domain.,tissue specificity:Low level in normal B and T-cells, high level in activated lymphocytes and monocytes. Also found in thymus, tonsil, bone marrow, developing vessels, and fetal brain.,

Recommended Dilution

WB: 1:1000 - 1:2000

Not yet tested in other applications.

Images



Western Blot analysis using HLX1 Monoclonal antibody against Mouse pancreas cell lysate.

Storage

-20°C for one year

501 Changsheng S Rd, Nanhu Dist, Jiaxing, Zhejiang, China

Tel: 86 21 31007137 | E-mail: save@bt-laboratory.com | www.bt-laboratory.com