

HP1 Alpha Monoclonal Antibody

Description

Product type	Primary Antibody
Code	BT-MCA0732
Host	Mouse
Isotype	IgG
Size	50ul, 100ul
Immunogen	Purified recombinant human HP1 α protein fragments expressed in E.coli.
Mol wt	N/A
Species reactivity	Human, Mouse, Rat, Bovine, Dog, Pig
Clonality	Monoclonal
Recommended application	WB, IF, ICC
Concentration	1 mg/ml
Full name	Chromobox protein homolog 5
Synonyms	CBX5; HP1A; Chromobox protein homolog 5; Antigen p25; Heterochromatin protein 1 homolog alpha; HP1 alpha

This product is for research use only, not for use in human, therapeutic or diagnostic procedure.

Background

This gene encodes a highly conserved nonhistone protein, which is a member of the heterochromatin protein family. The protein is enriched in the heterochromatin and associated with centromeres. The protein has a single N-terminal chromodomain which can bind to histone proteins via methylated lysine residues, and a C-terminal chromo shadow-domain (CSD) which is responsible for the homodimerization and interaction with a number of chromatin-associated nonhistone proteins. The encoded product is involved in the formation of functional kinetochore through interaction with essential kinetochore proteins. The gene has a pseudogene located on chromosome 3. Multiple alternatively spliced variants, encoding the same protein, have been identified.

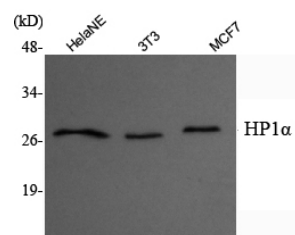
Recommended Dilution

IF: 1:100 - 1:500

WB: 1:1000 - 1:2000

Not yet tested in other applications.

Images



Western Blot analysis using HP1Alpha Monoclonal antibody against HeLa nuclear extract, 3T3, MCF7 whole cell lysate.

Storage

-20°C for one year