

## HSP60 Monoclonal Antibody

### Description

<b>Product type</b>	Primary Antibody
<b>Code</b>	BT-MCA0743
<b>Host</b>	Mouse
<b>Isotype</b>	IgG
<b>Size</b>	50ul, 100ul
<b>Immunogen</b>	Purified recombinant fragment of human HSP60 expressed in E. Coli.
<b>Mol wt</b>	N/A
<b>Species reactivity</b>	Human,Mouse,Rat,Monkey
<b>Clonality</b>	Monoclonal
<b>Recommended application</b>	WB, IHC-p, IF, ICC, FCM, ELISA
<b>Concentration</b>	1 mg/ml
<b>Full name</b>	60 kDa heat shock protein mitochondrial
<b>Synonyms</b>	HSPD1; HSP60; 60 kDa heat shock protein; mitochondrial; 60 kDa chaperonin; Chaperonin 60; CPN60; Heat shock protein 60; HSP-60; Hsp60; HuCHA60; Mitochondrial matrix protein P1; P60 lymphocyte protein

**This product is for research use only, not for use in human, therapeutic or diagnostic procedure.**

### Background

This gene encodes a member of the chaperonin family. The encoded mitochondrial protein may function as a signaling molecule in the innate immune system. This protein is essential for the folding and assembly of newly imported proteins in the mitochondria. This gene is adjacent to a related family member and the region between the 2 genes functions as a bidirectional promoter. Several pseudogenes have been associated with this gene. Two transcript variants encoding the same protein have been identified for this gene. Mutations associated with this gene cause autosomal recessive spastic paraplegia 13.

### Recommended Dilution

FC: 1:200 - 1:400

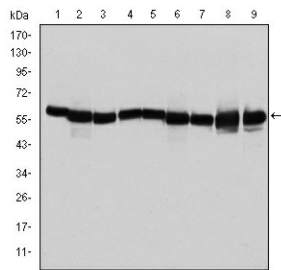
IF: 1:200 - 1:1000

IHC: 1:200 - 1:1000

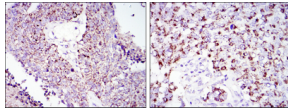
WB: 1:500 - 1:2000

Not yet tested in other applications.

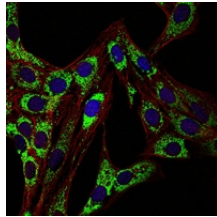
### Images



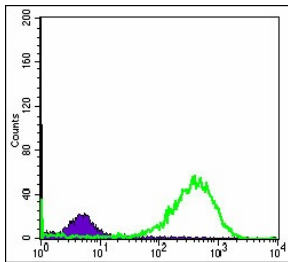
Western Blot analysis using HSP60 Monoclonal antibody against T47D (1) HeLa (2) HepG2 (3) A549 (4) Jurkat (5) HEK293 (6) NIH/3T3 (7) PC-12 (8) and Cos7 (9) cell lysate.



Immunohistochemistry analysis of paraffin-embedded lung cancer tissues (left) and kidney cancer tissues (right) with DAB staining using HSP60 Monoclonal antibody.



Immunofluorescence analysis of 3T3-L1 cells using HSP60 Monoclonal antibody (green). Blue: DRAQ5 fluorescent DNA dye. Red: Actin filaments have been labeled with Alexa Fluor-555 phalloidin.



Flow cytometric analysis of HeLa cells using HSP60 Monoclonal antibody (green) and negative control (purple).

## Storage

-20°C for one year

501 Changsheng S Rd, Nanhu Dist, Jiaxing, Zhejiang, China

Tel: 86 21 31007137 | E-mail: [save@bt-laboratory.com](mailto:save@bt-laboratory.com) | [www.bt-laboratory.com](http://www.bt-laboratory.com)