

## HSPB8/HSP22 Monoclonal Antibody(2C3)

### Description

Product type	Primary Antibody
Code	BT-MCA0751
Host	Mouse
Isotype	IgG
Size	20ul, 50ul, 100ul
Immunogen	Recombinant Protein of HSPB8/HSP22
Mol wt	N/A
Species reactivity	Human,Rat,Mouse
Clonality	Monoclonal
Recommended application	WB
Concentration	1 mg/ml
Full name	Heat shock protein beta-8
Synonyms	HSPB8; CRYAC; E2IG1; HSP22; PP1629; Heat shock protein beta-8; HspB8; Alpha-crystallin C chain; E2-induced gene 1 protein; Protein kinase H11; Small stress protein-like protein HSP22

This product is for research use only, not for use in human, therapeutic or diagnostic procedure.

### Background

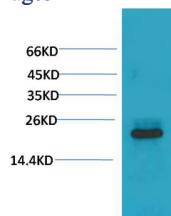
The protein encoded by this gene belongs to the superfamily of small heat-shock proteins containing a conservative alpha-crystallin domain at the C-terminal part of the molecule. The expression of this gene is induced by estrogen in estrogen receptor-positive breast cancer cells, and this protein also functions as a chaperone in association with Bag3, a stimulator of macroautophagy. Thus, this gene appears to be involved in regulation of cell proliferation, apoptosis, and carcinogenesis, and mutations in this gene have been associated with different neuromuscular diseases, including Charcot-Marie-Tooth disease.

### Recommended Dilution

WB: 1:1000-2000

Not yet tested in other applications.

### Images



Western blot analysis of 293T with HSPB8/HSP22 Mouse Monoclonal antibody diluted at 1:2.000.

### Storage

-20°C for one year