

## IL-8 mouse Monoclonal Antibody(13F8)

### Description

<b>Product type</b>	Primary Antibody
<b>Code</b>	BT-MCA0773
<b>Host</b>	Mouse
<b>Isotype</b>	IgG
<b>Size</b>	20ul, 50ul, 100ul
<b>Immunogen</b>	Synthetic C-TERM Peptide of IL-8
<b>Mol wt</b>	N/A
<b>Species reactivity</b>	Human
<b>Clonality</b>	Monoclonal
<b>Recommended application</b>	IHC-p, IF
<b>Concentration</b>	1 mg/ml
<b>Full name</b>	IL8
<b>Synonyms</b>	IL8

This product is for research use only, not for use in human, therapeutic or diagnostic procedure.

### Background

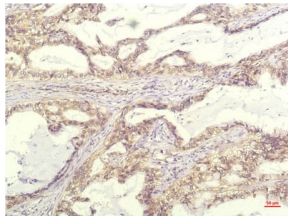
The protein encoded by this gene is a member of the CXC chemokine family. This chemokine is one of the major mediators of the inflammatory response. This chemokine is secreted by several cell types. It functions as a chemoattractant, and is also a potent angiogenic factor. This gene is believed to play a role in the pathogenesis of bronchiolitis, a common respiratory tract disease caused by viral infection. This gene and other ten members of the CXC chemokine gene family form a chemokine gene cluster in a region mapped to chromosome 4q.

### Recommended Dilution

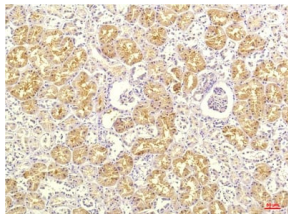
IHC: 1:100-200

Not yet tested in other applications.

### Images



Immunohistochemical analysis of paraffin-embedded Human Lung Carcinoma Tissue using IL-8 Mouse Monoclonal antibody diluted at 1:200.



Immunohistochemical analysis of paraffin-embedded Human Kidney Tissue using IL-8 Mouse Monoclonal antibody diluted at 1:200.

## Storage

-20°C for one year

501 Changsheng S Rd, Nanhu Dist, Jiaxing, Zhejiang, China

Tel: 86 21 31007137 | E-mail: [save@bt-laboratory.com](mailto:save@bt-laboratory.com) | [www.bt-laboratory.com](http://www.bt-laboratory.com)