

Integrin Alpha5 Monoclonal Antibody

Description

Product type	Primary Antibody
Code	BT-MCA0784
Host	Mouse
Isotype	IgG
Size	50ul, 100ul
Immunogen	Purified recombinant human Integrin α 5 (N-terminus) protein fragments expressed in E.coli.
Mol wt	N/A
Species reactivity	Human, Mouse, Rat, Bovine
Clonality	Monoclonal
Recommended application	WB, FCM
Concentration	1 mg/ml
Full name	Integrin alpha-5
Synonyms	ITGA5; FNRA; Integrin alpha-5; CD49 antigen-like family member E; Fibronectin receptor subunit alpha; Integrin alpha-F; VLA-5; CD antigen CD49e

This product is for research use only, not for use in human, therapeutic or diagnostic procedure.

Background

The product of this gene belongs to the integrin alpha chain family. Integrins are heterodimeric integral membrane proteins composed of an alpha subunit and a beta subunit that function in cell surface adhesion and signaling. The encoded preproprotein is proteolytically processed to generate light and heavy chains that comprise the alpha 5 subunit. This subunit associates with the beta 1 subunit to form a fibronectin receptor. This integrin may promote tumor invasion, and higher expression of this gene may be correlated with shorter survival time in lung cancer patients. Note that the integrin alpha 5 and integrin alpha V subunits are encoded by distinct genes.

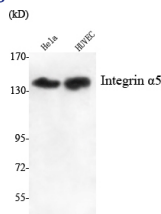
Recommended Dilution

FC: 1:100 - 1:200

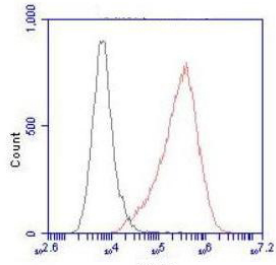
WB: 1:1000 - 1:2000

Not yet tested in other applications.

Images



Western Blot analysis using Integrin Alpha5 Monoclonal antibody against HeLa, HUVEC cell lysate.



Flow cytometric analysis of HeLa cells stained with Integrin Alpha5 Monoclonal antibody (red), followed by FITC-conjugated goat anti-mouse IgG. Black line histogram represents the isotype control, normal mouse IgG.

Storage

-20°C for one year

501 Changsheng S Rd, Nanhu Dist, Jiaxing, Zhejiang, China

Tel: 86 21 31007137 | E-mail: save@bt-laboratory.com | www.bt-laboratory.com