

Integrin Alpha6 Monoclonal Antibody

Description

Product type	Primary Antibody
Code	BT-MCA0785
Host	Mouse
Isotype	IgG
Size	50ul, 100ul
Immunogen	Purified recombinant human Integrin $\alpha 6$ (N-terminus) protein fragments expressed in E.coli.
Mol wt	N/A
Species reactivity	Human, Mouse, Rat, Bovine, Dog, Pig
Clonality	Monoclonal
Recommended application	WB, IF, ICC
Concentration	1 mg/ml
Full name	Integrin alpha-6
Synonyms	ITGA6; Integrin alpha-6; CD49 antigen-like family member F; VLA-6; CD antigen CD49f

This product is for research use only, not for use in human, therapeutic or diagnostic procedure.

Background

The gene encodes a member of the integrin alpha chain family of proteins. Integrins are heterodimeric integral membrane proteins composed of an alpha chain and a beta chain that function in cell surface adhesion and signaling. The encoded preproprotein is proteolytically processed to generate light and heavy chains that comprise the alpha 6 subunit. This subunit may associate with a beta 1 or beta 4 subunit to form an integrin that interacts with extracellular matrix proteins including members of the laminin family. The alpha 6 beta 4 integrin may promote tumorigenesis, while the alpha 6 beta 1 integrin may negatively regulate erbB2/HER2 signaling. Alternative splicing results in multiple transcript variants.

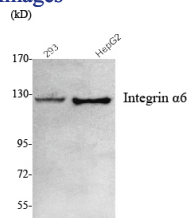
Recommended Dilution

IF: 1:100 - 1:500

WB: 1:1000 - 1:2000

Not yet tested in other applications.

Images



Western Blot analysis using Integrin Alpha6 Monoclonal antibody against 293, HepG2 cell lysate.

Storage

-20°C for one year