

Islet-1 Monoclonal Antibody

Description

| | |
|--------------------------------|--|
| Product type | Primary Antibody |
| Code | BT-MCA0789 |
| Host | Mouse |
| Isotype | IgG |
| Size | 50ul, 100ul |
| Immunogen | Purified recombinant fragment of human Islet-1 expressed in E. Coli. |
| Mol wt | N/A |
| Species reactivity | Human |
| Clonality | Monoclonal |
| Recommended application | WB, IF, ICC, ELISA |
| Concentration | 1 mg/ml |
| Full name | Insulin gene enhancer protein ISL-1 |
| Synonyms | ISL1; Insulin gene enhancer protein ISL-1; Islet-1 |

This product is for research use only, not for use in human, therapeutic or diagnostic procedure.

Background

This gene encodes a member of the LIM/homeodomain family of transcription factors. The encoded protein binds to the enhancer region of the insulin gene, among others, and may play an important role in regulating insulin gene expression. The encoded protein is central to the development of pancreatic cell lineages and may also be required for motor neuron generation. Mutations in this gene have been associated with maturity-onset diabetes of the young.

Recommended Dilution

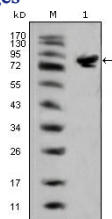
ELISA: 1:10000

IF: 1:200 - 1:1000

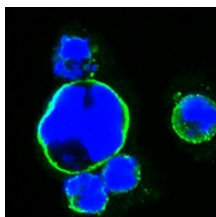
WB: 1:500 - 1:2000

Not yet tested in other applications.

Images



Western Blot analysis using Islet-1 Monoclonal antibody against full-length Islet-1 (aa1-349)-hIgGfc transfected HEK293 cell lysate(1).



Confocal immunofluorescence analysis of HEK293 cells transfected with full-length Islet-1-hIgGfc using Islet-1 Monoclonal antibody (green). Blue: DRAQ5 fluorescent DNA dye.

Storage

-20°C for one year

501 Changsheng S Rd, Nanhu Dist, Jiaxing, Zhejiang, China

Tel: 86 21 31007137 | E-mail: save@bt-laboratory.com | www.bt-laboratory.com