

Ki-67 Monoclonal Antibody

Description

Product type	Primary Antibody
Code	BT-MCA0804
Host	Mouse
Isotype	IgG
Size	50ul, 100ul
Immunogen	Synthetic peptide corresponding to aa (CEDLAGFKELFQTPG) of human Ki-67, conjugated to KLH.
Mol wt	N/A
Species reactivity	Human
Clonality	Monoclonal
Recommended application	WB, IHC-p, IF, ELISA
Concentration	1 mg/ml
Full name	Antigen KI-67
Synonyms	MKI67; Antigen KI-67

This product is for research use only, not for use in human, therapeutic or diagnostic procedure.

Background

This gene encodes a nuclear protein that is associated with and may be necessary for cellular proliferation. Alternatively spliced transcript variants have been described. A related pseudogene exists on chromosome X.

Recommended Dilution

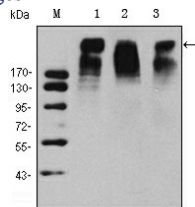
ELISA: 1:10000

IHC: 1:200 - 1:1000

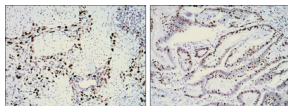
WB: 1:500 - 1:2000

Not yet tested in other applications.

Images



Western Blot analysis using Ki-67 Monoclonal antibody against HeLa (1) MCF-7 (2) and Raji (3) cell lysate.



Immunohistochemistry analysis of paraffin-embedded lung cancer (left) and rectal cancer (right) with DAB staining using Ki-67 Monoclonal antibody.

Storage

-20°C for one year