

KID Monoclonal Antibody

Description

Product type	Primary Antibody
Code	BT-MCA0807
Host	Mouse
Isotype	IgG
Size	50ul, 100ul
Immunogen	Purified recombinant fragment of human KID expressed in E. Coli.
Mol wt	N/A
Species reactivity	Human
Clonality	Monoclonal
Recommended application	WB, IHC-p, IF, FCM, ELISA
Concentration	1 mg/ml
Full name	Kinesin-like protein KIF22
Synonyms	KIF22; KID; KNSL4; Kinesin-like protein KIF22; Kinesin-like DNA-binding protein; Kinesin-like protein 4

This product is for research use only, not for use in human, therapeutic or diagnostic procedure.

Background

The protein encoded by this gene is a member of the kinesin-like protein family. The family members are microtubule-dependent molecular motors that transport organelles within cells and move chromosomes during cell division. The C-terminal half of this protein has been shown to bind DNA. Studies with the *Xenopus* homolog suggests its essential role in metaphase chromosome alignment and maintenance. Alternatively spliced transcript variants encoding different isoforms have been found for this gene.

Recommended Dilution

ELISA: 1:10000

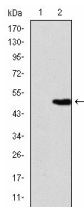
FC: 1:200 - 1:400

IHC: 1:200 - 1:1000

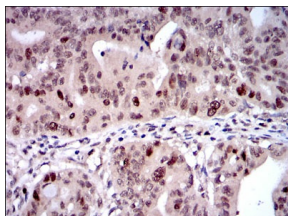
WB: 1:500 - 1:2000

Not yet tested in other applications.

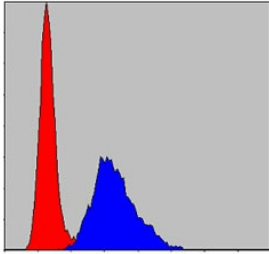
Images



Western Blot analysis using KID Monoclonal antibody against HEK293 (1) and KID-hIgGFc transfected HEK293 (2) cell lysate.



Immunohistochemistry analysis of paraffin-embedded rectum cancer tissues with DAB staining using KID Monoclonal antibody.



Flow cytometric analysis of NIH/3T3 cells using KID Monoclonal antibody (blue) and negative control (red).

Storage

-20°C for one year

501 Changsheng S Rd, Nanhu Dist, Jiaxing, Zhejiang, China

Tel: 86 21 31007137 | E-mail: save@bt-laboratory.com | www.bt-laboratory.com