

KLHL1 Monoclonal Antibody

Description

Product type	Primary Antibody
Code	BT-MCA0811
Host	Mouse
Isotype	IgG
Size	50ul, 100ul
Immunogen	Purified recombinant fragment of human KLHL1 expressed in E. Coli.
Mol wt	N/A
Species reactivity	Human
Clonality	Monoclonal
Recommended application	WB, IF, ICC, ELISA
Concentration	1 mg/ml
Full name	Kelch-like protein 1
Synonyms	KLHL1; KIAA1490; Kelch-like protein 1

This product is for research use only, not for use in human, therapeutic or diagnostic procedure.

Background

The KLHL1 protein belongs to a family of actin-organizing proteins related to Drosophila Kelch (Nemes et al., 2000 [PubMed 10888605]). [supplied by OMIM, Feb 2010],

Recommended Dilution

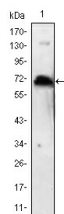
ELISA: 1:10000

IF: 1:200 - 1:1000

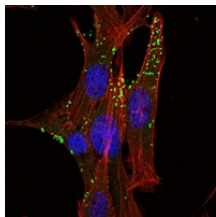
WB: 1:500 - 1:2000

Not yet tested in other applications.

Images



Western Blot analysis using KLHL1 Monoclonal antibody against KLHL1 recombinant protein.



Immunofluorescence analysis of NIH/3T3 cells using KLHL1 Monoclonal antibody (green). Red: Actin filaments have been labeled with Alexa Fluor-555 phalloidin.

Storage

-20°C for one year

501 Changsheng S Rd, Nanhu Dist, Jiaxing, Zhejiang, China

Tel: 86 21 31007137 | E-mail: save@bt-laboratory.com | www.bt-laboratory.com