

KLHL13 Monoclonal Antibody

Description

Product type	Primary Antibody
Code	BT-MCA0815
Host	Mouse
Isotype	IgG
Size	50ul, 100ul
Immunogen	Purified recombinant fragment of human KLHL13 expressed in E. Coli.
Mol wt	N/A
Species reactivity	Human
Clonality	Monoclonal
Recommended application	WB, IHC-p, IF, ICC, FCM, ELISA
Concentration	1 mg/ml
Full name	Kelch-like protein 13
Synonyms	KLHL13; BKLHD2; KIAA1309; Kelch-like protein 13; BTB and kelch domain-containing protein 2

This product is for research use only, not for use in human, therapeutic or diagnostic procedure.

Background

This gene encodes a BTB and kelch domain containing protein and belongs to the kelch repeat domain containing superfamily of proteins. The encoded protein functions as an adaptor protein that complexes with Cullin 3 and other proteins to form the Cullin 3-based E3 ubiquitin-protein ligase complex. This complex is necessary for proper chromosome segregation and completion of cytokinesis. Alternate splicing results in multiple transcript variants.

Recommended Dilution

FC: 1:200 - 1:400

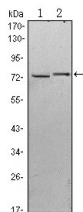
IF: 1:200 - 1:1000

IHC: 1:200 - 1:1000

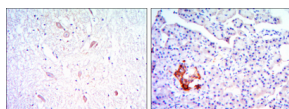
WB: 1:500 - 1:2000

Not yet tested in other applications.

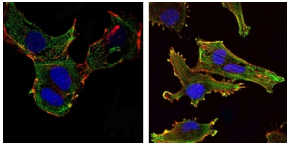
Images



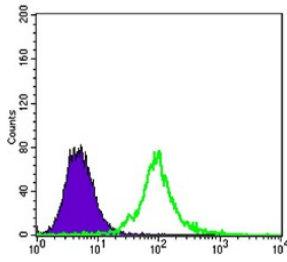
Western Blot analysis using KLHL13 Monoclonal antibody against HeLa (1) and MCF-7 (2) cell lysate.



Immunohistochemistry analysis of paraffin-embedded brain tissues (left) and pancreas tissues (right) with DAB staining using KLHL13 Monoclonal antibody.



Immunofluorescence analysis of NTERA-2 cells (left) and U251 (right) cells using KLHL13 Monoclonal antibody (green). Blue: DRAQ5 fluorescent DNA dye. Red: Actin filaments have been labeled with Alexa Fluor-555 phalloidin.



Flow cytometric analysis of 3T3/L1 cells using KLHL13 Monoclonal antibody (green) and negative control (purple).

Storage

-20°C for one year

501 Changsheng S Rd, Nanhu Dist, Jiaxing, Zhejiang, China

Tel: 86 21 31007137 | E-mail: save@bt-laboratory.com | www.bt-laboratory.com