

Lamin A Monoclonal Antibody

Description

Product type	Primary Antibody
Code	BT-MCA0827
Host	Mouse
Isotype	IgG
Size	50ul, 100ul
Immunogen	Purified recombinant fragment of human Lamin A expressed in E. Coli.
Mol wt	N/A
Species reactivity	Human,Mouse,Rat
Clonality	Monoclonal
Recommended application	WB, IHC-p, IF, ELISA
Concentration	1 mg/ml
Full name	Prelamin-A,C
Synonyms	LMNA; LMN1; Prelamin-A; C

This product is for research use only, not for use in human, therapeutic or diagnostic procedure.

Background

The nuclear lamina consists of a two-dimensional matrix of proteins located next to the inner nuclear membrane. The lamin family of proteins make up the matrix and are highly conserved in evolution. During mitosis, the lamina matrix is reversibly disassembled as the lamin proteins are phosphorylated. Lamin proteins are thought to be involved in nuclear stability, chromatin structure and gene expression. Vertebrate lamins consist of two types, A and B. Alternative splicing results in multiple transcript variants. Mutations in this gene lead to several diseases: Emery-Dreifuss muscular dystrophy, familial partial lipodystrophy, limb girdle muscular dystrophy, dilated cardiomyopathy, Charcot-Marie-Tooth disease, and Hutchinson-Gilford progeria syndrome.

Recommended Dilution

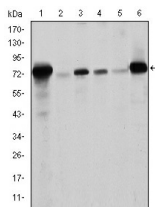
ELISA: 1:10000

IHC: 1:200 - 1:1000

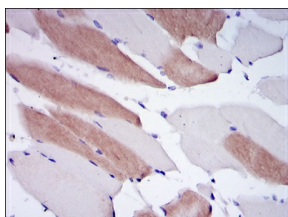
WB: 1:500 - 1:2000

Not yet tested in other applications.

Images



Western Blot analysis using Lamin A Monoclonal antibody against Raw264.7 (1) PC-12 (2) THP-1 (3) A431 (4) MCF-7 (5) and Jurkat (6) cell lysate.



Immunohistochemistry analysis of paraffin-embedded human striated muscle tissues with DAB staining using Lamin A Monoclonal antibody.

Storage

-20°C for one year

501 Changsheng S Rd, Nanhu Dist, Jiaxing, Zhejiang, China

Tel: 86 21 31007137 | E-mail: save@bt-laboratory.com | www.bt-laboratory.com