

LC3B mouse Monoclonal Antibody(9H5)

Description

Product type	Primary Antibody
Code	BT-MCA0841
Host	Mouse
Isotype	IgG
Size	20ul, 50ul, 100ul
Immunogen	Recombinant Protein of LC3B of MAP1LC3B
Mol wt	N/A
Species reactivity	Human
Clonality	Monoclonal
Recommended application	IHC-p, IF
Concentration	1 mg/ml
Full name	MAP1LC3B
Synonyms	MAP1LC3B

This product is for research use only, not for use in human, therapeutic or diagnostic procedure.

Background

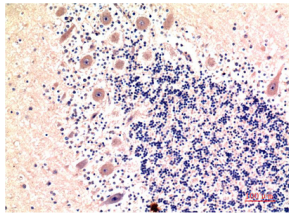
The product of this gene is a subunit of neuronal microtubule-associated MAP1A and MAP1B proteins, which are involved in microtubule assembly and important for neurogenesis. Studies on the rat homolog implicate a role for this gene in autophagy, a process that involves the bulk degradation of cytoplasmic component.

Recommended Dilution

IHC: 1:100-200

Not yet tested in other applications.

Images



Immunohistochemical analysis of paraffin-embedded Human Brain Tissue using LC3B Mouse Monoclonal antibody diluted at 1:200.

Storage

-20°C for one year

501 Changsheng S Rd, Nanhu Dist, Jiaxing, Zhejiang, China

Tel: 86 21 31007137 | E-mail: save@bt-laboratory.com | www.bt-laboratory.com