

LEDGF Monoclonal Antibody

Description

Product type	Primary Antibody
Code	BT-MCA0843
Host	Mouse
Isotype	IgG
Size	50ul, 100ul
Immunogen	Purified recombinant fragment of human LEDGF expressed in E. Coli.
Mol wt	N/A
Species reactivity	Human,Rat,Monkey
Clonality	Monoclonal
Recommended application	WB, IHC-p, IF, ICC, ELISA
Concentration	1 mg/ml
Full name	PC4 and SFRS1-interacting protein
Synonyms	PSIP1; DFS70; LEDGF; PSIP2; PC4 and SFRS1-interacting protein; CLL-associated antigen KW-7; Dense fine speckles 70 kDa protein; DFS 70; Lens epithelium-derived growth factor; Transcriptional coactivator p75; p52

This product is for research use only, not for use in human, therapeutic or diagnostic procedure.

Background

A chromosomal aberration involving PSIP1 is associated with pediatric acute myeloid leukemia (AML) with intermediate characteristics between M2-M3 French-American-British (FAB) subtypes. Translocation t(9[11](p22)p15) with NUP98. The chimeric transcript is an in-frame fusion of NUP98 exon 8 to PSIP1/LEDGF exon 4.,domain:Residues 340-417 are necessary and sufficient for the interaction with HIV-1 IN (IBD domain).,function:Transcriptional coactivator involved in neuroepithelial stem cell differentiation and neurogenesis. Involved in particular in lens epithelial cell gene regulation and stress responses. May play an important role in lens epithelial to fiber cell terminal differentiation. May play a protective role during stress-induced apoptosis. Isoform 2 is a more general and stronger transcriptional coactivator.

Recommended Dilution

ELISA: 1:10000

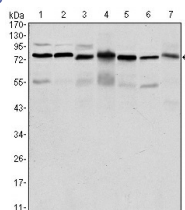
IF: 1:200 - 1:1000

IHC: 1:200 - 1:1000

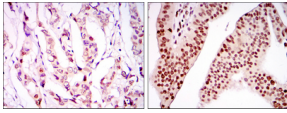
WB: 1:500 - 1:2000

Not yet tested in other applications.

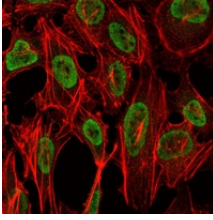
Images



Western Blot analysis using LEDGF Monoclonal antibody against HepG2 (1) Jurkat (2) K562 (3) Cos7 (4) PC-12 (5) HeLa (6) and NIH/3T3 (7) cell lysate.



Immunohistochemistry analysis of paraffin-embedded breast cancer tissues (left) and ovarian cancer tissues (right) with DAB staining using LEDGF Monoclonal antibody.



Immunofluorescence analysis of NIH/3T3 cells using LEDGF Monoclonal antibody (green). Red: Actin filaments have been labeled with Alexa Fluor-555 phalloidin.

Storage

-20°C for one year

501 Changsheng S Rd, Nanhu Dist, Jiaxing, Zhejiang, China

Tel: 86 21 31007137 | E-mail: save@bt-laboratory.com | www.bt-laboratory.com