

LHX2 Monoclonal Antibody

Description

Product type	Primary Antibody
Code	BT-MCA0844
Host	Mouse
Isotype	IgG
Size	50ul, 100ul
Immunogen	Purified recombinant fragment of human LHX2 expressed in E. Coli.
Mol wt	N/A
Species reactivity	Human
Clonality	Monoclonal
Recommended application	WB, IF, ICC, ELISA
Concentration	1 mg/ml
Full name	LIM,homeobox protein Lhx2
Synonyms	LHX2; LH2; LIM; homeobox protein Lhx2; Homeobox protein LH-2; LIM homeobox protein 2

This product is for research use only, not for use in human, therapeutic or diagnostic procedure.

Background

This gene encodes a protein belonging to a large protein family, members of which carry the LIM domain, a unique cysteine-rich zinc-binding domain. The encoded protein may function as a transcriptional regulator. The protein can recapitulate or rescue phenotypes in *Drosophila* caused by a related protein, suggesting conservation of function during evolution.

Recommended Dilution

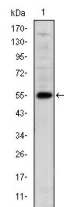
ELISA: 1:10000

IF: 1:200 - 1:1000

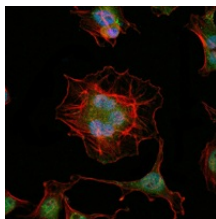
WB: 1:500 - 1:2000

Not yet tested in other applications.

Images



Western Blot analysis using LHX2 Monoclonal antibody against human LHX2 (AA: 200-406) recombinant protein.



Immunofluorescence analysis of HeLa cells using LHX2 Monoclonal antibody (green). Blue: DRAQ5 fluorescent DNA dye. Red: Actin filaments have been labeled with Alexa Fluor-555 phalloidin.

Storage

-20°C for one year

501 Changsheng S Rd, Nanhu Dist, Jiaxing, Zhejiang, China

Tel: 86 21 31007137 | E-mail: save@bt-laboratory.com | www.bt-laboratory.com