

## LIN-28 Monoclonal Antibody

### Description

<b>Product type</b>	Primary Antibody
<b>Code</b>	BT-MCA0845
<b>Host</b>	Mouse
<b>Isotype</b>	IgG
<b>Size</b>	50ul, 100ul
<b>Immunogen</b>	Purified recombinant fragment of LIN-28 (aa93-209) expressed in E. Coli.
<b>Mol wt</b>	N/A
<b>Species reactivity</b>	Human
<b>Clonality</b>	Monoclonal
<b>Recommended application</b>	WB, IF, ICC, ELISA
<b>Concentration</b>	1 mg/ml
<b>Full name</b>	Protein lin-28 homolog A
<b>Synonyms</b>	LIN28A; CSDD1; LIN28; ZCCHC1; Protein lin-28 homolog A; Lin-28A; Zinc finger CCHC domain-containing protein 1

This product is for research use only, not for use in human, therapeutic or diagnostic procedure.

### Background

This gene encodes a LIN-28 family RNA-binding protein that acts as a posttranscriptional regulator of genes involved in developmental timing and self-renewal in embryonic stem cells. The encoded protein functions through direct interaction with target mRNAs and by disrupting the maturation of certain miRNAs involved in embryonic development. This protein prevents the terminal processing of the LET7 family of microRNAs which are major regulators of cellular growth and differentiation. Aberrant expression of this gene is associated with cancer progression in multiple tissues.

### Recommended Dilution

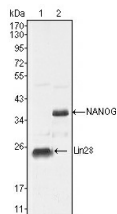
ELISA: 1:10000

IF: 1:200 - 1:1000

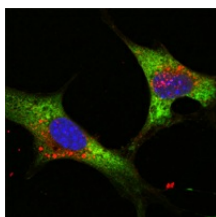
WB: 1:500 - 1:2000

Not yet tested in other applications.

### Images



Western Blot analysis using LIN-28 Monoclonal antibody against NTERA-2 cell lysate (1).



Confocal immunofluorescence analysis of NTERA-2 cells using LIN-28 Monoclonal antibody (green). Blue: DRAQ5 fluorescent DNA dye.

## Storage

-20°C for one year

501 Changsheng S Rd, Nanhu Dist, Jiaxing, Zhejiang, China

Tel: 86 21 31007137 | E-mail: [save@bt-laboratory.com](mailto:save@bt-laboratory.com) | [www.bt-laboratory.com](http://www.bt-laboratory.com)