

## LPL Monoclonal Antibody

### Description

<b>Product type</b>	Primary Antibody
<b>Code</b>	BT-MCA0847
<b>Host</b>	Mouse
<b>Isotype</b>	IgG
<b>Size</b>	50ul, 100ul
<b>Immunogen</b>	Purified recombinant fragment of LPL expressed in E. Coli.
<b>Mol wt</b>	N/A
<b>Species reactivity</b>	Human
<b>Clonality</b>	Monoclonal
<b>Recommended application</b>	WB, ELISA
<b>Concentration</b>	1 mg/ml
<b>Full name</b>	Lipoprotein lipase
<b>Synonyms</b>	LPL; LIPD; Lipoprotein lipase; LPL

This product is for research use only, not for use in human, therapeutic or diagnostic procedure.

### Background

LPL encodes lipoprotein lipase, which is expressed in heart, muscle, and adipose tissue. LPL functions as a homodimer, and has the dual functions of triglyceride hydrolase and ligand/bridging factor for receptor-mediated lipoprotein uptake. Severe mutations that cause LPL deficiency result in type I hyperlipoproteinemia, while less extreme mutations in LPL are linked to many disorders of lipoprotein metabolism.

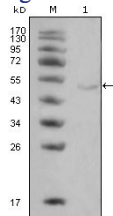
### Recommended Dilution

ELISA: 1:10000

WB: 1:500 - 1:2000

Not yet tested in other applications.

### Images



Western Blot analysis using LPL Monoclonal antibody against HeLa cell lysate (1).

### Storage

-20°C for one year

501 Changsheng S Rd, Nanhu Dist, Jiaxing, Zhejiang, China

Tel: 86 21 31007137 | E-mail: [save@bt-laboratory.com](mailto:save@bt-laboratory.com) | [www.bt-laboratory.com](http://www.bt-laboratory.com)