

LPP Monoclonal Antibody

Description

Product type	Primary Antibody
Code	BT-MCA0848
Host	Mouse
Isotype	IgG
Size	50ul, 100ul
Immunogen	Purified recombinant fragment of human LPP expressed in E. Coli.
Mol wt	N/A
Species reactivity	Human,Mouse,Monkey,Hamster
Clonality	Monoclonal
Recommended application	WB, IHC-p, IF, ICC, ELISA
Concentration	1 mg/ml
Full name	Lipoma-preferred partner
Synonyms	LPP; Lipoma-preferred partner; LIM domain-containing preferred translocation partner in lipoma

This product is for research use only, not for use in human, therapeutic or diagnostic procedure.

Background

This gene encodes a member of a subfamily of LIM domain proteins that are characterized by an N-terminal proline-rich region and three C-terminal LIM domains. The encoded protein localizes to the cell periphery in focal adhesions and may be involved in cell-cell adhesion and cell motility. This protein also shuttles through the nucleus and may function as a transcriptional co-activator. This gene is located at the junction of certain disease-related chromosomal translocations, which result in the expression of chimeric proteins that may promote tumor growth. Alternative splicing results in multiple transcript variants.

Recommended Dilution

ELISA: 1:10000

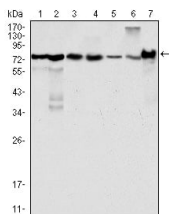
IF: 1:200 - 1:1000

IHC: 1:200 - 1:1000

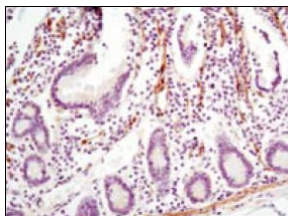
WB: 1:500 - 1:2000

Not yet tested in other applications.

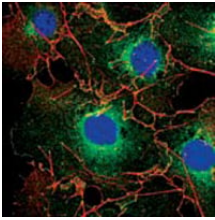
Images



Western Blot analysis using LPP Monoclonal antibody against HeLa (1) NIH/3T3 (2) COS (3) Caki (4) MCF-7 (5) HepG2 (6) and SMMC-7721 (7) cell lysate.



Immunohistochemistry analysis of paraffin-embedded human small intestine with DAB staining using LPP Monoclonal antibody.



Confocal immunofluorescence analysis of COS cells using LPP Monoclonal antibody (green). Red: Actin filaments have been labeled using DY-554 phalloidin. Blue: DRAQ5 fluorescent DNA dye.

Storage

-20°C for one year

501 Changsheng S Rd, Nanhu Dist, Jiaxing, Zhejiang, China

Tel: 86 21 31007137 | E-mail: save@bt-laboratory.com | www.bt-laboratory.com